

Since 1871

Sioux City Foundry Co.

Celebrating
OVER
150 Years

OF MANUFACTURING EXCELLENCE!



STOCKBOOK

STEEL SERVICE CENTER

Keith Boden, *Assistant Division Manager*

712-226-1184 | kboden@siouxcityfoundry.com

Inside Sales

888-331-4660 | sales@siouxcityfoundry.com

METAL CASTING

Dan Plesher, *Division Manager*

712-226-1272 | dplesher@siouxcityfoundry.com

Russell Vos

888-550-2560 | 712-226-1283 | rvos@siouxcityfoundry.com

REINFORCING STEEL

Chris Taylor, *Administrative Manager*

712-226-1739 | ctaylor@siouxcityfoundry.com

Tristian Blanchard

712-226-1735 | tristianblanchard@siouxcityfoundry.com

CONTRACT MANUFACTURING

Benjamin Bassett, *Division Manager*

712-226-1443 | bbassett@siouxcityfoundry.com

STRUCTURAL FABRICATION - SHERMAN TANK™

Benjamin Bassett, *Division Manager*

712-226-1443 | bbassett@siouxcityfoundry.com

TABLE OF CONTENTS

#

CAPABILITIES	2 - 4
BEAM COPING	5
MACHINING	6 - 7
LASER CUTTING	8
DEPARTMENTS	
CONTRACT MANUFACTURING	9
METAL CASTING	10 - 11
REINFORCING STEEL	12
STEEL SERVICE CENTER	13
STRUCTURAL FABRICATION	14
PRODUCTS	
CUTTING BLADES	15
SAFETY GRATINGS	16
SHERMAN TANK®	17 - 18
SNOW PUSHERS	19
WINE ON THE WALL	20
STEEL WAREHOUSE MATERIALS	21 - 48
ANGLES	
Aluminum Angles	21
Hot Rolled Angles	21
Galvanized Angles	22
Stainless Angles	22
Structural Angles	22 - 23
BEAMS	
Galvanized Beams	23
Standard I Beams	23 - 24
Wide Flange Beams	24
CHANNELS	
Aluminum Channels	25
Bar Channels	25
Galvanized Channels	25
Junior Channels	25
Structural Channels	26
EXPANDED METAL & GRATING	
Flattened Expanded Metal	26
SAF-T (Raised) Expanded Metal	26

Walk Way Grate	27
Galvanized Grip Strut	27
Galvanized Ladder Rungs.....	27
PIPE	
SCH 40 Galvanized Pipe.....	27
Extra Strong Tested Pipe.....	28
SCH 40 Aluminum Pipe.....	28
SCH 10 Lite Wall Pipe	28
SCH 40 Stainless Pipe.....	28
SCH 40 Structural Pipe	29
Standard Tested Pipe	29
PLATES	
Aluminum Tread Brite	30
Abrasive Plates	30
Floor Plates.....	30
Aluminum Plates.....	30
High Strength Plates.....	31
Hot Rolled Plates	31 - 32
Stainless Plates.....	32
SHEETS	
Aluminum Sheets	33
Cold Rolled Sheets	33
Galvanized Sheets.....	33 - 34
Hot Rolled Sheets	34 - 35
Stainless Sheets.....	35
ROUNDS	
Cold Rolled Rounds.....	36
Aluminum Rounds	36
Galvanized Rounds.....	37
Hot Rolled Rounds.....	37
Stainless Rounds	37
Stress-proof Rounds.....	38
HEXAGONS & SQUARES	
Cold Rolled Hexagons	38
Cold Rolled Squares.....	39
Hot Rolled Squares.....	39
REBAR	
Grade 40 Rebar	39
Grade 60 Rebar	39
No Grade Rebar.....	39

STRIPS

Single Bevel Cutting Edge40
Galvanized Strips 40
Hot Rolled Strips..... 41 - 41

FLATS

Aluminum Flats 41
Cold Rolled Flats 41
Galvanized Flats 42
Hot Rolled Flats..... 42 - 43
Stainless Flats 44

TUBING

Aluminum Square Tubing 44
High Strength Round Tubing 44
Hrew Round Auger Tubing 45
Rectangular Tubing 45 - 46
Round Mechanical Tubing..... 46
Round Repair Tubing (Bushing Stock)..... 46
Stainless Tubing 47
Square Tubing 47 - 48
Galvanized Tubing 48

HELPFUL INFORMATION 49

Weights & Measures 50 - 51
Metric Equivalents 52
Fractions/Decimals/Millimeters 53
Thickness Tolerance Ranges..... 54



CAPABILITIES

BENDING & STRAIGHTENING



- Accurpress Brake 500 hydraulic, 16' x 500 ton 5 axis
- Pacific, MO. 200 hydraulic, 14' x 200 ton 3 axis
- Cincinnati Press Brake 175 ton 6 axis
- Verson 2010-65 mechanical, 12' x 65 ton
- Chicago No. 9 mechanical, 8' x 15 ton
- Cold beam hydraulic cambering, W36 x 160
- Small hydraulic press for straightening & 75 ton tube bender

BLASTING



- Tumble Blast
- Pass through Blast

CASTING



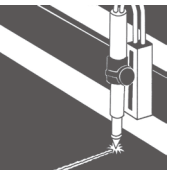
- All grades Gray, Ductile, A.D.I. & wear resistant Ni-Hard Irons
- Castings from ounces to 3500 lbs.
- Squeezers, Roto-Lift, Hunters
- Flaskless molding up to 60 x 72
- Oil sand, shell sand, Isocure Core Processes
- In house Spectrograph Annealing

DRILLING



- Radial
- Cincinnati, American & Johansson Drill Presses
- Delta, Clausing & Hooper
- Wide variety of hand drills

LASER CUTTING



- 3 Bystronic laser tables
- Up to 6000 WATT capacity
- Cuts steel from .0313" up to and including 1" thick

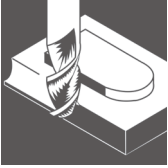
LIFTING



- (1) 2 Ton Jib Crane
- (1) 2 Ton Bridge Crane
- (3) 7.5 Ton Bridge Cranes
- (2) 10 ton bridge cranes, 1.2 acres outdoor coverage
- (7) 5 Ton bridge cranes, 3.25 acres indoor coverage
- Forklift capacities to 5500 lbs.

CAPABILITIES

MACHINING CENTER



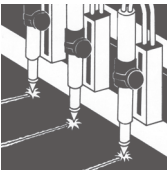
- HAAS 4 axis VF5 Vertical Machining Center
 - Drilling, Milling, Boring
 - Tapping
 - Thread Milling
 - Slotting
 - Coping

MANDREL BENDING



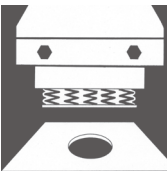
- Pendrick Model A-7 Bender
- Pipe Capacity 2" ext.
 - Heavy reinforcing bar - or - bar stock 1 3/4" dia.
- American Hercules 8' wide x 1/2" thick
- Dari 8' wide x 5/8" thick

PLASMA & FLAME CUTTING



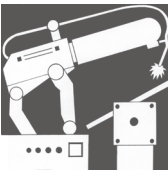
- Sector Plasma/Oxy Fuel Hi Def 17 x 41
- 1 300A plasma and
- 1 100A precision plasma

PUNCHING up to 100 ton



- Peddinghaus beam line 100 ton
- Peddinghaus & Buffalo Iron Workers
- Straight side hydraulic 90 ton
- Bliss 60 ton & 90 ton
- Verson 75 ton
- Loshbaugh Jordan 5 ton

ROBOTIC WELDING



- Panasonic VR-008A with HM-350 Dip Pulse power source
- High rigidity and reliability
- Software controlled digital servo
- Exceptionally wide working envelope
- Positioning repetition, Precision 0.004" or less

ROLLING up to 8' wide x 5/8" thick



- American Hercules 8' wide x 1/2" thick
- Sheet roll 6' wide x 10 gauge
- Sheet roll 4' wide x 14 gauge
- Davi 5/8 x 96"

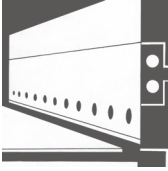
CAPABILITIES

SAWING



- Behringer Band Saw, maximum throat size of 19.6" H x 38" W
Recommended bundle size 17.7" H x 31.5" W
First measuring device 120" griper feed, Accuracy $\pm .004$
Second measuring device length measuring stop, Accuracy $\pm .004$
Cut length capabilities up to 60'-00"
5 ton bundle cutting capability
- Scotchman band saw 14"x19", up to 60° mitre

SHEARING up to 20' long & 1/2" thick



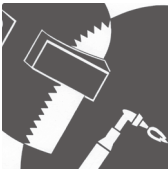
- Accurshear 1/2"x20' & Cincinnati 1/4" x 10'
- Pexto 5' up to 16 gauge
- Whitney angle L6x6 x 1/2"
- Peddinghaus Angle Master 6 x 6 x 1/2"
- Peddinghaus Bar Shear 3/4 x 16 flat

SHOP EQUIPMENT



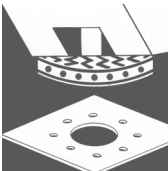
- 2 Oster thread cutting machines
- Wide variety of surface, stationary & hand grinders
- Wide variety of air impact equipment up to 1" drives

WELDING up to 800 amp.



- Mig wire feed (GMAW) to 600 amp.
- Stick welding (SMAW) to 300 amp.
- Stud welding 7/8" diameter studs @800 amp.
- Spot welders Federal, Rex automatic & Tungsten inert gas (Tig)
- Acetylene gas & Heliarcs

TURRET PUNCH up to 45 ton



- CNC Turret P/P Strippit 1250/45-72 45 ton
- 1.25" diameter on .375 material
- 200 hpm on 1" center to center
- 2000 ipm travel 50" wide sheets

BEAM COPING

High Definition Plasma

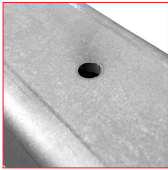
FEATURES



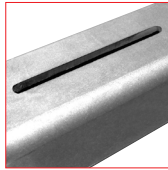
- **4-Side Cutting & Layout Marking**
Ability to reach all four sides of a profile increases proficiency and decreases turn-around time
- **High Definition Plasma**
Faster cutting speed and enables piercing and cutting thicker material
- **Advanced Software**
Eliminates manual programming, saving you time and money



CAPABILITIES



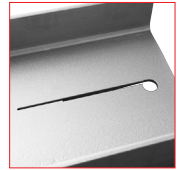
BOLT HOLES
(AISC M2.5 ACCEPTED)



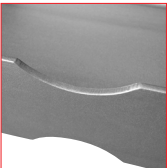
SLOT HOLES



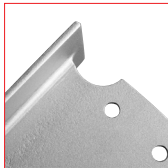
**WEB CUTS,
FLANGE CUTS,
& CUT OUTS**



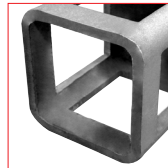
JAY ALLEN



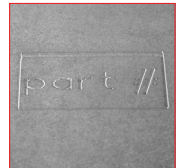
DOG BONE



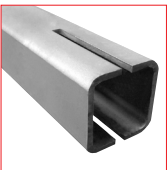
RAT HOLE



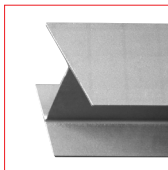
**SQUARE TUBE
CUTTING**



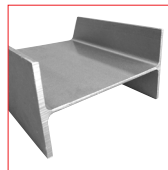
MARKINGS



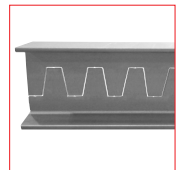
**THROUGH
PLATE
CONNECTIONS**



**DOUBLE
MITRE CUT**



**WELD
PREPARATIONS**

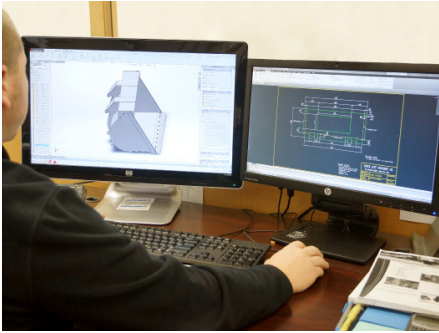


**BEAM
SPLITTING &
CASTELLATION**

CAPABILITIES - BEAM COPING

MACHINING

CAPABILITIES - MACHINING

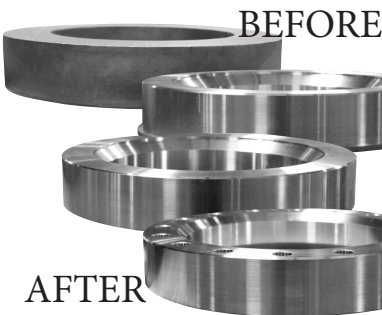
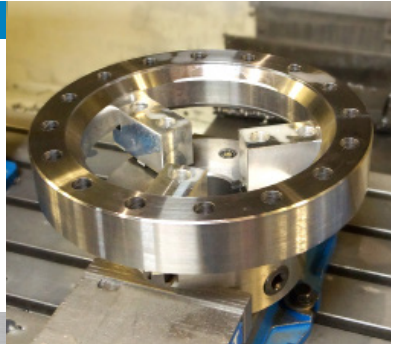


VARIETY OF CAPABILITIES

- Solid Model Drafting
- CNC Milling
- CNC Turning
- Forming
- Rolling
- Welding
- Shearing
- Robotic Welding
- Laser Cutting
- Plasma Cutting
- Flame Cutting

BENEFITS

- Fast & Accurate Estimates
- On-Time Delivery
- Exceptional Customer Service
- Quality Assurance
- Experienced in a Variety of Materials
- Large Selection of Steel Products Available
- On-Campus Warehouse for Faster Turn-Around



FINISHING SERVICES

- Galvanizing
- Electroplating
- Anodizing
- Powder coating
- Painting



EQUIPMENT & CAPACITY LIST

CNC MACHINING (X, Y, Z)

Haas VF5

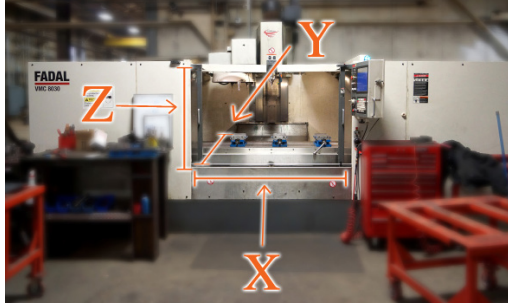
- Travel (48" x 23" x 22")

Fadal VMC8030

- Travel (80" x 30" x 27")

Milltronics MB20

- Travel (48" x 16" x 20")



CNC TURNING

Fanuc Series Oi-TD SL25 Lathe

- 3.5" Maximum bar diameter
through spindle

LASER CUTTING

(2)Bystronic 4020

- 72" x 144" Bed
- 1" Maximum Material Thickness

(1)Bystronic 6000

- 72" x 144" Bed
- 1" Maximum Material Thickness

ROLLING

Mechanical Rolling

- 4" Minimum Diameter
(*lighter gauges*)
- 6" Minimum Diameter
(*up to 7.0 GA material*)
- 8' Maximum Material Length
- 5/8" Maximum Material Thickness

Hydraulic Rolling

- 101" Maximum Material Length
- 1/2" Maximum Material Thickness

ROBOTIC WELDING

Panasonic VR-008

- 6-axis - 60" reach
- 350 Amp
- Edge-Sensing Probe

FLAME CUTTING

- 144" x 480" Bed

Plasma (Hi-Def)

- 1-1/4" Maximum Material Thickness

Oxy Fuel

- 4" Maximum Material Thickness

OTHER EQUIPMENT

Band Saws

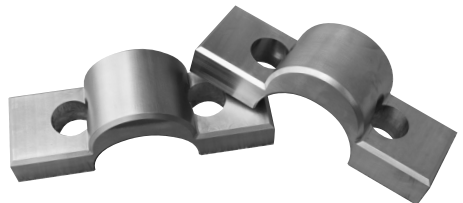
- 18"W x 16"H
- 1,000 lb. Maximum
- 39"W x 15"H
- 5,000 lb. Maximum

Plate & Sheet Metal Shears

- 120"LG x 120"W
- 1/4" Maximum Plate Thickness
- 288"LG x 240"W
- 1/2" Maximum Plate Thickness

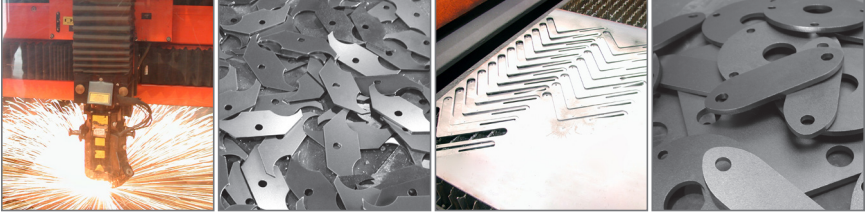
Press Brakes

- 500 Ton



LASER CUTTING

HIGH PERFORMANCE LASERS FOR ACCURATELY FINISHED PARTS

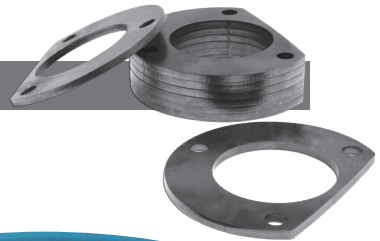


Sioux City Foundry provides fast and friendly service. From product quality to on-time delivery, customer satisfaction is our top priority. With our high performance lasers, we guarantee accurately finished parts.

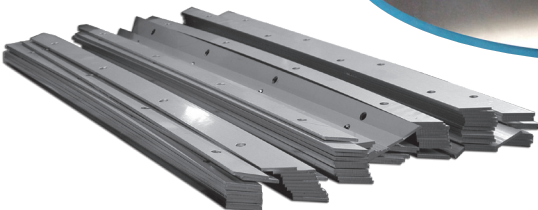
- 72" x 144" Bed Size
- 0.0313" to 1" thickness capacity
- Customer satisfaction is top priority
- High performance lasers
- Accurately finished parts
- Metal etching capabilities
- Fast and friendly service
- On-time delivery
- Quality cut parts
- Competitive pricing

VARIETY OF CUT MATERIALS:

- Stainless Steel
- Carbon Steel
- Galvanized Steel
- Aluminum



Sioux City Foundry Co.



CONTRACT MANUFACTURING

DEPARTMENTS - CONTRACT MANUFACTURING



Sioux City Foundry's Contract Manufacturing Department handles all your contract welding and fabrication needs from blueprint to finished product. We also provide tooling for your contract steel projects. We can drill, bore, mill, cope and thread mill your manufactured metal products with our Machining Center.

ADVANTAGES:

- Tooling is available from contract steel projects
- In-house quality assurance team & ISO 9001:2015 quality management system
- Contract metal projects completed on-time with quality, precision and professionalism
- On-campus Machining Center can give your project the finishing touches
- Reliable source for steel fabricated parts

VARIETY OF CAPABILITIES:

- Solid Model Drafting
- CNC Milling
- CNC Turning
- Forming
- Rolling
- Welding
- Shearing
- Robotic Welding
- Laser Cutting
- Plasma Cutting
- Fabricated Tanks
- Flame Cutting
- Machine Castings
- MIG & TIG Welding
- Sawing
- Coping
- Punching
- Drilling
- Tapping
- Slotting

SHERMAN TANK®

METAL CASTING

Over 150 Years of Casting Experience

DEPARTMENTS - METAL CASTING



EQUIPMENT LIST

MELT

- (2) Ajax 8000 lbs. coreless induction furnaces
- new in 2008

LAB

- GDS 500A Leco spectrograph
- CS 200 Leco carbon sulfur determinator

GREEN SAND MOLDING

- (2) B&P 75B Speedmuller
- PLC based Hartley Controls sand control system
- (1) 14x19 Hunter molding machine with automated cooling line
- (1) 20x24 Hunter molding machine with automated cooling line
- (4) Jolt Squeeze molding stations
- (1) Rota-Lift molding station

NO BAKE MOLDING

- 1000 lb./min Kloster sand mixer with temperature classifier
- PLC based mold loop
- 6000 lb. roll over
- (3) 4000 lb. mold handler
- Rail palletized mold pouring and cooling line

CORE

- NO BAKE
 - 500 lb. / min Palmer sand mixer
 - 4000 lb. roll over
- OIL SAND
- SHELL SAND
- ISOCURE SAND
 - 300 lb. / min Kloster sand mixer
 - Gaylord SATB-40 core blower



**Scan to View
Our Video!**

CAPACITIES

MELT / POUR

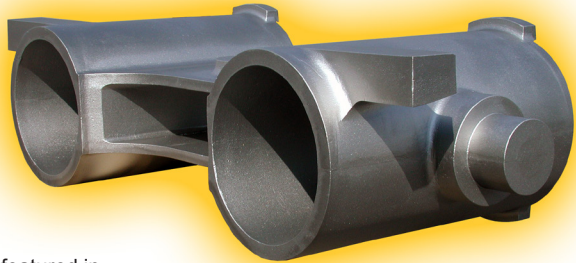
- 30 Tons per 8 hr. shift
- Gray Iron
 - 5000 lb. pour weight
 - 3500 lb. casting weight
- Ductile Iron
 - 2200 lb. pour weight
 - 1600 lb. casting weight

MOLD

- 72" x 72" x 20" maximum envelope per mold half
- 4000 lb. maximum sand weight per mold half



As featured in
Metal Casting Design & Purchasing



Awarded Best in Class Castings 140 Years

REINFORCING STEEL

Residential · Commercial · D.O.T. · Municipal

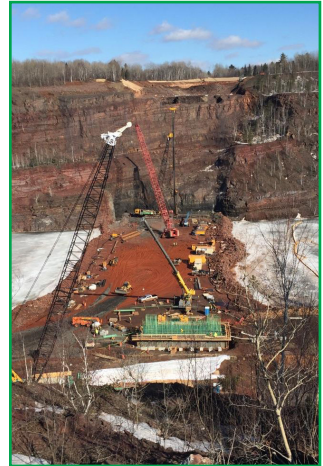
DEPARTMENTS - REINFORCING STEEL



TAKE ADVANTAGE OF THE MANY BENEFITS OF OUR REINFORCING STEEL DEPARTMENT

- Siouxland's ONLY certified Epoxy Coating Rebar Plant
- Utilized for residential, commercial, and transportation applications
- In-stock rebar lengths of 20', 30', 40' and 60'
- CRSI Certified for Fusion Bonded Epoxy Coating
- Black or epoxy coated reinforcing steel
- DOT certified
- Fabricated, cut, and bent to order
- Reinforcing Steel Services:
 - Shear
 - Bend
 - Epoxy Coat
- Smooth paving dowels:
 - Available in 3/4", 1", 1-1/4", and 1-1/2" dia.
 - All DOT certified
 - Custom cut to length
 - Black or epoxy coated
- Many orders available next-day
- In-house estimating and detailing

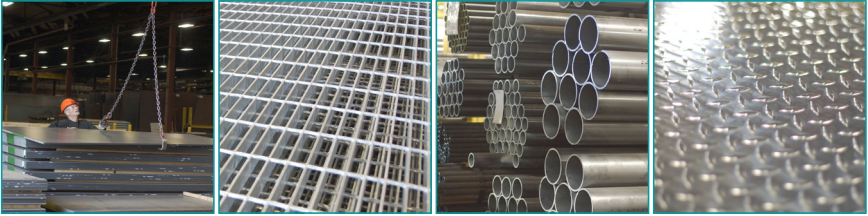
Your
Premier
Rebar
Supplier!



STEEL SERVICE CENTER

Your Premier Wholesale Steel Company

DEPARTMENTS - STEEL SERVICE CENTER



WIDE VARIETY OF STOCK STEEL & PROCESSING CAPABILITIES

- Competitive prices on all stock steel
- Efficient processing of your ordered steel materials
- Schedule your order for worry-free delivery or ready to pick up
- Laser cutting up to & including one-inch thick using our Bystronic Laser Tables
- Quick & efficient cutting of your materials with our Sector Plasma Oxy Fuel Hi-Def Machine
- Excellent customer service, order and delivery

VARIETY OF STEEL PRODUCTS*

*Not all product are listed here. View our complete list of steel materials available on PAGES 25-52.

ALUMINUM

- Angles
- Channels
- Plates
- Sheets
- Pipe
- Tread Brite
- Rounds
- Flats
- Squares
- Tubing

COLD ROLLED

- Sheets
- Rounds
- Hexagons
- Squares
- Flats

GALVANIZED

- Angles
- Beams
- Channels
- Grip Strut
- Ladder Rungs
- Sheets
- Rounds
- Flats
- Strips

HOT ROLLED

- Angles
- Plates
- Sheets
- Rounds
- Squares
- Flats
- Strips

STAINLESS

- Angles
- Sheets
- Rounds
- Flats
- Tubing

Call today to speak with a member of our qualified sales staff. Let Sioux City Foundry's experience, quality products and excellent customer service provide the materials needed for your next project.

STRUCTURAL FABRICATION

STRUCTURAL FABRICATION



QUALITY WORKMANSHIP FOR OVER 50 YEARS

- One of the most versatile structural fabrication shops in the Midwest
- Competitive pricing and quality service
- Located next to our own Steel Service Center
- Our professional staff provides reliable products, services, and on-time delivery

CAPABILITIES INCLUDE:

- Sawing
- Drilling
- Welding
- Punching
- Cutting
- Heavy Weldments
- Structural Fabrication

Whether you require a single structural beam or an entire structural assembly, Sioux City Foundry is your one-stop metal shop!

CUTTING BLADES

CAN BE USED ON ALL MAJOR BRANDS AND EQUIPMENT



Ask us how we can save you money on your loader bits!



PRODUCTS - CUTTING BLADES

We sell a variety of blades including:

- Loader Blades
- Grader Blades
- Snow Plow Blades & Accessories
- Dozer Blades
- Scraper Blades



High-Carbon grader blades provide the most economical solution in high-abrasion, low-impact applications.



Heat-Treated, through-hardened blades provide a balance between wear resistance and impact breakage.

SAFETY GRATINGS

Ideal for Commercial and Industrial Applications

Sioux City Foundry is proud to offer our customers a full line of Cooper B-Line

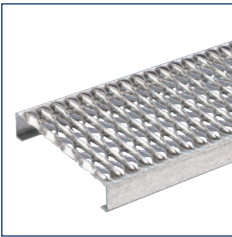
COOPER B-Line

Safety Grating products. We target all your safety needs with more types, sizes and finishes of grating products. Safety grating products are designed with slip resistance in all directions. Safety grating products can be used for walking and working surfaces where mud, ice, snow, grease, oil or detergents cause slippery or hazardous conditions.

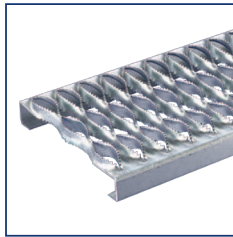
USED IN A WIDE VARIETY OF PROJECTS, INCLUDING:

- Platforms
- Industrial Flooring
- Catwalks
- Balconies
- Walkways
- Stair Treads
- Under Bridge Inspection
- Refineries
- Pedestrian Walkways
- Scaffold Planking
- Mezzanines

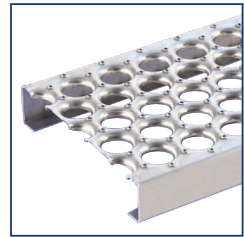
HEAVY DUTY GRIP STRUT®



GRIP STRUT®



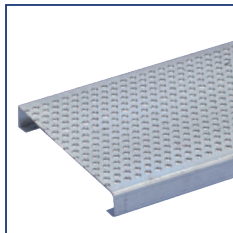
PERF-O GRIP®



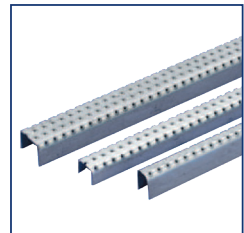
GRATE LOCK®



TRACTION TREAD™



TRACTION TREAD™
LADDER RUNG



PRODUCTS - SAFETY GRATINGS

SHERMAN TANK®

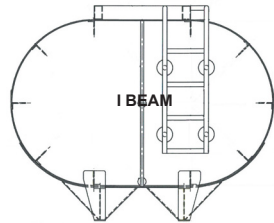
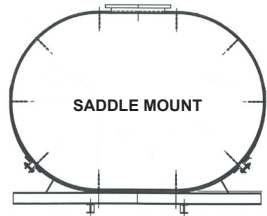
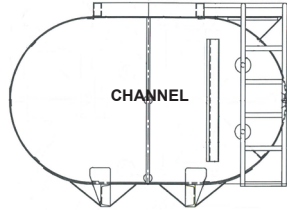
BUILT LIKE A SHERMAN TANK®



The Sherman Tank® product line is offered in a wide variety of capacities and configurations including: oval, round, elliptical, rectangular and modified square.

Options for our Sherman Tank® products are limited only by your needs and imagination. Sherman Tank® has built its technical expertise to provide larger vertical and horizontal storage solutions that meet *API Standard 650* and *NACE SP0294*.


We produce DOT Cargo & Vacuum tanks (DOT 406, 407, 412) as well as Custom pressure and vacuum vessels that are ASME **U** Stamp, National Board **NB** and Repair **R** Certified. We also produce non-certified cargo and storage water and fuel tanks.



PRODUCTS - SHERMAN TANK®




OVAL WATER TANKS



CAPACITY	MODEL#	HEIGHT	WIDTH	LENGTH	WEIGHT
1000 GAL.	WT-1	43"	60"	9'-0"	1980#
1200 GAL.	WT-2	48"	60"	10'-0"	2180#
1500 GAL.	WT-3	43"	60"	14'-0"	2610#
1500 GAL.	WT-4	48"	72"	10'-0"	2710#
2000 GAL.	WT-5	48"	72"	14'-0"	3500#
2000 GAL.	WT-6	48"	78"	12'-0"	3520#
2500 GAL.	WT-7	48"	84"	14'-0"	3850#
3000 GAL.	WT-8	60"	86"	14'-0"	4550#
3500 GAL.	WT-9	60"	86"	16'-0"	4900#
4000 GAL.	WT-10	60"	86"	18'-0"	5340#
4500 GAL.	WT-11	60"	86"	20'-3"	6007#


OVAL FUEL TANKS



CAPACITY	MODEL#	HEIGHT	WIDTH	LENGTH	WEIGHT
1000 GAL.	FT-1 XS	60"	95"	4'-0"	2280#
1250 GAL.	FT-2 XS	60"	95"	5'-0"	2735#
1500 GAL.	FT-4 XS	60"	95"	6'-0"	3200#
2000 GAL.	FT-6 XS	60"	95"	8'-0"	3973#
2500 GAL.	FT-7 XS	60"	95"	10'-0"	4710#
3000 GAL.	FT-8 XS	60"	95"	12'-0"	5302#
3500 GAL.	FT-9 XS	60"	95"	14'-0"	5716#
4000 GAL.	FT-10 XS	60"	95"	16'-0"	6378#
4500 GAL.	FT-11 XS	60"	95"	18'-0"	7022#


ADD 8 3/16" FOR SUBFRAME & 5" FOR ROLL OVER PROTECTION

ELLIPTICAL TANKS



CAPACITY	MODEL#	HEIGHT	WIDTH	LENGTH	WEIGHT
800 GAL.	FT-1 XS	64"	96"	3'-9"	1882#
1000 GAL.	FT-1 XS	64"	96"	4'-5"	2183#
1500 GAL.	FT-4 XS	64"	96"	6'-8"	3325#
1750 GAL.	FT-5 XS	64"	96"	7'-6"	3541
2000 GAL.	FT-6 XS	64"	96"	8'-0"	4344#


MODIFIED SQUARE TANKS



CAPACITY	HEIGHT	WIDTH	LENGTH
2250 GAL.	55"	92"	10'
4000 GAL.	65"	92"	15'

other dimensions available upon request


ROUND TANKS



CAPACITY	HEIGHT	WIDTH	LENGTH
800 GAL.			
1000 GAL.			
1500 GAL.			
1750 GAL.			
2000 GAL.			

other dimensions available upon request

RECTANGULAR TANKS



CAPACITY	MODEL#	HEIGHT	WIDTH	LENGTH	WEIGHT
1500 GAL.	RWT-15	46"	72"	9'-0"	2230#
2000 GAL.	RWT-20	48"	82"	10'-0"	2920#
2500 GAL.	RWT-25	60"	82"	10'-0"	3580#
3000 GAL.	RWT-30	72"	82"	10'-0"	3980#

ADD 3" HEIGHT FOR SKIDS

SNOW PUSHERS

Great for Large Parking Lots

HEAVY DUTY CONSTRUCTION

- Custom Built to Fit Any Payloader
- 1-1/2" Thick Rubber Blade
- Reversible & Adjustable
- Add-on Fence for Extra Height
- Available in orange or black



Add-on Fence for Extra Height *Sold Separately



PRODUCTS - SNOW PUSHERS

wine ON THE wall

STAINLESS STEEL WINE RACKS

888.258.7015 • www.wineonthewall.com • wineracks@wineonthewall.com

PRODUCTS - WINE ON THE WALL



SPACE SAVER

Wine On the Wall's sleek design allows you to display wine without taking up space on counters or floors.



HIGH QUALITY

High quality stainless steel wine racks offer simplicity and durability; a great way to display and store wine.



SLEEK DESIGN

Wine On the Wall stainless steel wine racks aren't bulky like wooden racks and won't stain wine labels.



EXPERIENCE THE DESIGN DIFFERENCE

Whether you are looking for a 12-bottle wine rack, or 15,000-bottle wine cellar, Wine On the Wall can fit your needs. We offer FREE design consultations and manufacture for small spaces, as well as large cellars; for both residential and commercial markets.



Wine On the Wall stainless steel wine racks aren't bulky like wooden racks and won't stain your wine bottle labels. No matter the size of your collection, display your wine in style with Wine On the Wall.



Our high quality stainless steel wine racks offer simplicity and durability. Create a modern element to your kitchen, pantry, or wine cellar with Wine On the Wall!



Design your own wine cellar! Our professional design services will help you create your unique wine storage from consultation to design and installation of your wine rack.



WOW your guests when they see your practical and stylish wine rack. Whether you require a single 12-bottle rack or an entire room, we have the design solution for you. **Call 888-258-7015 today!**



SINGLE CASE WINE RACKS

ENDLESS CONFIGURATIONS

Perfect for small kitchen spaces and pantries! These single case wine racks are great for wine hobbyists who want a modern, sophisticated way to display and store their wine, without the space to house a large collection.

ANGLES

ALUMINUM ANGLES

6061-T6

Stock Lengths 25'



SCF STOCK #	SIZE IN INCHES (A X B X C)				WT. / FT.	
57307	3/4	X	3/4	X	1/8	0.201
57311	1	X	1	X	1/8	0.275
57315	1 ^{1/2}	X	1 ^{1/2}	X	1/8	0.423
57319					3/16	0.619
57327					1/4	0.809
57335	2	X	2	X	1/8	0.577
57343					3/16	0.850
57351					1/4	1.110
57359	3	X	3	X	1/4	1.684

HOT ROLLED ANGLES

A36

Stock Lengths 20'



SCF STOCK #	SIZE IN INCHES (A X B X C)				WT / FT	WT / 20'	
18	1/2	X	1/2	X	1/8	0.38	8
34	3/4	X	3/4	X	1/8	0.59	12
68	1	X	1	X	1/8	0.80	16
76					3/16	1.16	23
84					1/4	1.49	30
107	1 ^{1/4}	X	1 ^{1/4}	X	1/8	1.01	20
115					3/16	1.48	30
123					1/4	1.92	38
165	1 ^{1/2}	X	1 ^{1/2}	X	1/8	1.23	25
173	1 ^{1/2}	X	1 ^{1/2}	X	3/16	1.8	36
181					1/4	2.34	47
220	1 ^{3/4}	X	1 ^{3/4}	X	3/16	2.12	42
238					1/4	2.77	55
270	2	X	1 ^{1/2}	X	3/16	2.12	42
288					1/4	2.77	55
296	2	X	2	X	1/8	1.65	33
301					3/16	2.44	49
319					1/4	3.19	64
335					3/8	4.7	94
408	2 ^{1/2}	X	2	X	3/8	5.3	106
432	2 ^{1/2}	X	2 ^{1/2}	X	3/16	3.07	61
440					1/4	4.10	82
458					5/16	5.00	100
466					3/8	5.90	118

We have the capabilities to shear, punch, cut, and stamp hot rolled angles. See our capabilities on pages 2-4.

GALVANIZED ANGLES**A36****Stock Lengths 20'**

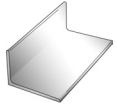
SCF STOCK #	SIZE IN INCHES (A X B X C)				WT / FT	WT / 20'
36459	1	X	1	1/4	1.56	31.20
36483	1 ^{1/4}	X	1 ^{1/4}	X 1/4	2.02	40.40
36491	1 ^{1/2}	X	1 ^{1/2}	X 1/8	1.29	25.80
36506				3/16	1.89	37.80
36514				1/4	2.46	49.20
36556	2	X	2	X 1/8	1.73	34.60
36564				3/16	2.56	51.20
36572				1/4	3.35	67.00
36629	2 ^{1/2}	X	2 ^{1/2}	X 1/4	4.31	86.20
36679	3	X	3	X 3/16	3.89	77.80
36645				1/4	5.15	103.00
36661	4	X	4	X 1/4	6.93	138.60

STAINLESS ANGLES**TYPE 304****Stock Lengths 20' R/L**

SCF STOCK #	SIZE IN INCHES (A X B X C)				WT / FT	WT / 20'
37811	1	X	1	X 1/8	0.80	16.00
37829				3/16	1.16	23.20
37837				1/4	1.49	29.80
37845	1 ^{1/4}	X	1 ^{1/4}	X 1/8	1.01	20.20
37861				1/4	1.92	38.40
37879	1 ^{1/2}	X	1 ^{1/2}	X 1/8	1.23	24.60
37887				3/16	1.80	36.00
37895				1/4	2.34	46.80
37900	2	X	2	X 1/8	1.65	33.00
37918				3/16	2.44	48.80
37926				1/4	3.19	63.80
37984	3	X	3	X 1/4	4.90	98.00

STRUCTURAL ANGLES**A36****Stock Lengths 20' & 40'**

* Both 20' & 40'



SCF STOCK # FOR 20'	SIZE IN INCHES (A X B X C)				WT / FT	WT / 40'	SCF STOCK # FOR 40'
7002	3	X	2	X 3/16	3.07	123	
7044				1/4	4.10	164	
7125				3/8	5.90	118	
7361	3	X	3	X 3/16	3.71	148	
7400				1/4	4.90 *	196	7418
7442				5/16	6.10	244	
7484				3/8	7.20 *	288	7492
7905	3 ^{1/2}	X	3 ^{1/2}	X 1/4	5.80	232	

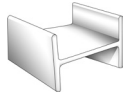
We have the capabilities to bundle cut, saw cut, shear, punch, and stamp stainless angles. As well as stamp, shear cut and weld galvanized angles. See our capabilities on pages 2-4.

STRUCTURAL ANGLES**A36****Stock Lengths 20' & 40'**

* Both 20' & 40'



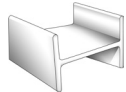
SCF STOCK # FOR 20'	SIZE IN INCHES (A X B C)				WT / FT	WT / 40'	SCF STOCK # FOR 40'
7912	3 ^{1/2}	X	3 ^{1/2}	X	5/16	7.20	288
7989					3/8	8.50	340
8105	4	X	3	X	1/4 *	5.80	232
8197					3/8	8.50	340
8391	4	X	3 ^{1/2}	X	5/16	7.70	308
8545	4	X	4	X	1/4	6.60 *	264
8595					5/16	8.20	328
8626					3/8	9.80 *	392
8715					1/2	12.80	512
8838	5	X	3	X	1/4	6.60	264
8919					3/8	9.80	392
8993	5	X	3 ^{1/2}	X	1/4	7.00	280
9038					5/16	8.70	348
	5	X	5	X	5/16	10.30	412
9313	5	X	5	X	3/8	12.30	492
9517	6	X	3 ^{1/2}	X	5/16	9.80	392
9559					3/8	11.70	468
9630	6	X	4	X	5/16	10.30	412
9672					3/8	12.30	492
8753					1/2	16.20	648
9834					3/4	23.60	944
9955	6	X	6	X	3/8	14.90	596
9962	7	X	4	X	3/8	13.60	272

BEAMS**GALVANIZED BEAMS****A36****Stock Lengths 20'**

SCF STOCK #	DEPTH WT/FT	LBS	WEB THICK (B)	FLANGE WIDTH (C)	FLANGE THICK (D)
37471	4 X	8.1	0.193	2.663	0.293

STANDARD I BEAMS**A992 / A572-50****Stock Lengths 20' & 40'**

* Both 20' & 40'



SCF STOCK FOR 20'	DEPTH IN WGT LBS	DEPTH INCHES (A)	WEB THICK (B)	FLANGE WIDTH (C)	FLANGE THICK (D)	SCF STOCK FOR 40'
10940	3 X	5.7	3.00	0.170	2.230	0.260
	3 X	7.5	3.00	0.349	2.509	0.260
11027	4 X	7.7	4.00	0.193	2.663	0.293
	5 X	10	5.00	0.214	3.004	0.326
						11116

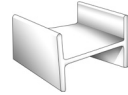
We have the capabilities to punch holes, slots, and saw cut wide flange beams.
See our capabilities on pages 2-4.

STANDARD I BEAMS

A992 / A572-50

Stock Lengths 20' & 40'

* Both 20' & 40'

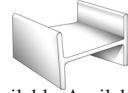


SCF STOCK FOR 20'	DEPTH WGT LBS	DEPTH INCHES (A)	WEB THICK (B)	FLANGE WIDTH (C)	FLANGE THICK (D)	SCF STOCK FOR 40'
6 X	12.5	6.00	0.232	3.332	0.359	11190
8 X	18.4	8.00	0.271	4.001	0.425	11352
10 X	25.4	10.00	0.311	4.661	0.491	11433

WIDE FLANGE BEAMS

A992 / A572-50

Stock Lengths 40'

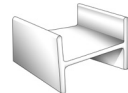


SCF STOCK #	SIZE IN WGT / LBS	DEPTH INCHES (A)	WEB THICK (B)	FLANGE WIDTH (C)	FLANGE THICK (D)	Available in 50'	Available in 60'
12112	4 X 13#	4.16	0.280	4.060	0.345		
12277	6 X 9#	5.90	0.170	3.940	0.215		
12316	6 X 12#	6.03	0.230	4.000	0.280		
12390	6 X 15#	5.99	0.230	5.990	0.260		
12358	6 X 16#	6.28	0.260	4.030	0.405		
12411	6 X 20#	6.20	0.260	6.020	0.365		
12594	8 X 10#	7.89	0.170	3.940	0.205		
12675	8 X 15#	8.11	0.245	4.015	0.315		
12714	8 X 18#	8.14	0.230	5.250	0.330		
12721	8 X 21#	8.28	0.250	5.270	0.400		
12798	8 X 24#	7.93	0.245	6.495	0.400	*	
12879	8 X 31#	8.00	0.285	7.995	0.435		*
13104	10 X 12#	9.87	0.190	3.960	0.210		
13231	10 X 19#	10.24	0.250	4.020	0.395		
13262	10 X 22#	10.17	0.240	5.750	0.360		
13401	10 X 33#	9.73	0.290	7.960	0.435		
13914	12 X 16#	11.00	0.220	3.990	0.265		
13956	12 X 19#	12.16	0.235	4.000	0.350		
13972	12 X 22#	12.31	0.260	4.030	0.425		
14033	12 X 26#	12.22	0.230	6.490	0.380	*	*
14677	14 X 22#	13.74	0.230	5.000	0.335		*
15314	16 X 26#	15.69	0.250	5.500	0.345		
15348	16 X 31#	15.88	0.275	5.525	0.440	*	*

WIDE FLANGE BEAMS

A992 / A572-50

Stock Lengths 50' & 60'



SCF STOCK #	SIZE IN WGT / LBS	DEPTH INCHES (A)	WEB THICK (B)	FLANGE WIDTH (C)	FLANGE THICK (D)	
15368	16 X 36#	15.86	0.295	6.985	0.430	
15370	18 X 35#	17.70	0.300	6.000	0.425	50' only
15377	18 X 50#	17.99	0.355	7.495	0.570	
15383	21 X 44#	20.66	0.350	6.500	0.450	60' only
15389	21 X 50#	20.83	0.380	6.530	0.535	
15395	21 X 62#	20.99	0.400	8.240	0.615	60' only
15400	24 X 55#	23.57	0.395	7.005	0.505	

CHANNELS

ALUMINUM CHANNEL

6061-T6

Stock Lengths 25'



SCF STOCK #	DEPTH IN INCHES (A)	WEB THICKNESS (B)	FLANGE WIDTH (C)	WT. / FT.
57408	3	0.170	1.41	1.42
57416	4	0.180	1.58	1.85

BAR CHANNEL

A36

Stock Lengths 20'



SCF STOCK #	DEPTH IN INCHES (A)		FLANGE WIDTH (C)		WEB THICKNESS (B)	WT / FT	WT / 20'
6551	1	X	1/2	X	1/8	0.84	17
6577	1 ^{1/4}	X	1/2	X	1/8	1.00	20
6585	1 ^{1/2}	X	1/2	X	1/8	1.12	22
6593	1 ^{1/2}	X	9/16	X	3/16	1.44	29
6624	2	X	1/2	X	1/8	1.43	29
6658	2	X	1	X	1/8	1.59	32
6666	2	X	1	X	3/16	2.32	46
6674	2 ^{1/2}	X	5/8	X	3/16	2.27	45

GALVANIZED CHANNEL

A36

Stock Lengths 20'



SCF STOCK #	DEPTH IN INCHES (A)		FLANGE WIDTH (C)		WEB THICKNESS (B)	WT / FT
37390	2	X	1.000	X	3/16	2.44
37308	3	X	1.410	X	0.170	4.31
37324	4	X	1.584	X	0.184	5.67
37340	5	X	1.750	X	0.190	7.03
37366	6	X	1.920	X	0.200	8.61

JUNIOR CHANNEL

A36

Stock Lengths 40'



SCF STOCK #	DEPTH IN INCHES (A)	WEB THICKNESS (B)	FLANGE WIDTH (C)	WT / FT	WT / 25'	WT / 40'
19033	10	0.120	1.500	8.4	336	
19075	12	0.190	1.500	10.6	424	

STRUCTURAL CHANNEL

A36
 Stock Lengths 20' & 40'
 * Both 20' & 40'

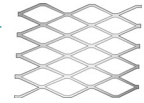


SCF STOCK # 20'	DEPTH IN INCHES (A)	WT / FT	WEB THICKNESS (B)	FLANGE WIDTH (C)	SCF STOCK # 40'
18025	3.00	3.500	0.132	1.372	
18100	3.00	4.100	0.170 *	1.410	18118
18142	3.00	5.000	0.258	1.498	
18163	4.00	4.500	0.184	1.584	
18184	4.00	5.400	0.184 *	1.584	18192
18223	4.00	7.250	0.321	1.172	
18265	5.00	6.700	0.190 *	1.750	18273
18311	5.00	9.000	0.325	1.885	
18346	6.00	8.200	0.200 *	1.920	18354
18388	6.00	10.500	0.314	2.034	
	6.00	13.000	0.437	2.157	18435
18469	7.00	9.800	0.210	2.090	
18621	8.00	11.500	0.220 *	2.260	18639
	8.00	13.750	0.303	2.343	18663
	8.00	18.750	0.487	2.527	18710
	10.00	15.300	0.240	2.600	18833
	12.00	20.700	0.282	2.942	18914
	12.00	25.000	0.387	3.047	18956
	15.00	33.900	0.400	3.400	18960

EXPANDED METAL

FLATTENED EXPANDED METAL

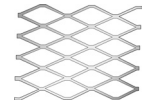
A36
 Stock Size 48" X 96"



SCF STOCK #	SIZE IN INCHES	THICKNESS	OPENING SIZE		WT PER SQ. FT.	WT PER SHEET
			SWO	LWO		
35411	1/2	X 18 GA	0.312	1.000	0.66	22
35429		13 GA	0.265	1.000	1.40	45
35437	3/4	X 13 GA	0.688	1.781	0.75	24
35445		9 GA	0.563	1.688	1.71	55
35479	1 ^{1/2}	X 13 GA	1.062	2.750	0.57	19
35453		9 GA	1.000	2.563	1.14	37

SAF-T RAISED EXPANDED METAL

A36
 Stock Size 48" X 96"

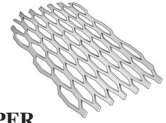


SCF STOCK #	SIZE IN INCHES	THICKNESS	OPENING SIZE		WT PER SQ. FT.	WT PER SHEET
			SWO	LWO		
35534		9 GA	0.688	1.562	1.80	58

We have the capabilities to saw cut structural channel.
 See our capabilities on pages 2-4.

GRATING

WALK WAY GRATING



A36

SCF STOCK #	SIZE IN INCHES	PLATE SIZE		OPENING SIZE		WT PER SQ. FT.	WT PER SHEET	WT PER THICKNESS
				SWO	LWO			
35607	3.00#	48	X 96	0.940	3.44	3.00	96	0.183
35615		72	X 96	0.940	3.44	3.00	144	
35623	4.00#	48	X 96	0.940	3.40	4.00	128	0.215
35631		60	X 96	0.940	3.44	4.00	160	
35649		72	X 96	0.940	3.44	4.00	192	
35681	4.27#	48	X 96	1.000	2.88	4.27	137	0.250

GALVANIZED GRIP STRUT

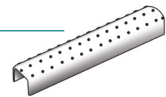
All 12Ga



SCF STOCK #	LENGTH IN FT	WIDTH	HEIGHT	WT./FT.	MEASURE
37475	12 GL	4 ^{3/4}	X 2	3.50	12.00
37477	12 GL	7	X 1 ^{1/2}	4.00	12.00
37479	10 GL	9 ^{1/2}	X 1 ^{1/2}	3.60	10.00
37480	12 GL	9 ^{1/2}	X 2	5.25	12.00
37482	10 GL	11 ^{3/4}	X 1 ^{1/2}	4.20	10.00
37483	12 GL	11 ^{3/4}	X 1 ^{1/2}	4.25	12.00
37484	12 GL	11 ^{3/4}	X 2	6.08	12.00
37485	10 GL	11 ^{3/4}	X 2	6.10	10.00
37487	12 GL	18 ^{3/4}	X 2	8.58	12.00
37489	10 GL	24	X 2	10.40	10.00
37491	12 GL	24	X 2	10.42	12.00
37493	12 GL	24	X 4 ^{1/2}	12.42	12.00

GALVANIZED LADDER RUNGS

A36



SCF STOCK #	PIPE SIZE	ROW	GA	WT./FT.	MEASURE
37499	60 GL	3 ROW	13 GA	1.10	5.00

PIPE

SCH 40 GALVANIZED PIPE

Stock Lengths 21'



SCF STOCK #	PIPE SIZE	SIZE IN INCHES (OD)	WALL THICKNESS	WT / FT IN LBS
37448	1	1.315	0.133	1.764
37450	1 ^{1/4}	1.660	0.140	2.383
37453	1 ^{1/2}	1.900	0.145	2.856
37456	2	2.375	0.154	3.832
37464	3	3.500	0.216	7.959

We have the capabilities to bundle and saw cut pipe.
See our capabilities on pages 2-4.

EXTRA STRONG TESTED PIPE**A53 SCH 80**

Stock Lengths 21'



SCF STOCK #	PIPE SIZE	OUTSIDE DIA (OD)	WALL THICKNESS	WT / FT IN LBS
31388	1/2	0.840	0.147	1.090
31394	3/4	1.050	0.154	1.470
31409	1	1.315	0.179	2.170
31417	1 ^{1/4}	1.660	0.191	3.000
31425	1 ^{1/2}	1.900	0.200	3.630
31433	2	2.375	0.218	5.020
31441	2 ^{1/2}	2.875	0.276	7.66
31459	3	3.500	0.300	10.25
31467	3 ^{1/2}	4.000	0.318	12.51

SCH 40 ALUMINUM PIPE**6061-T-6**

Stock Lengths 20'



SCF STOCK #	PIPE SIZE	SIZE IN INCHES (OD)	WALL THICKNESS	WT / FT IN LBS
57504	3/4	1.050	0.113	0.391
57512	1	1.315	0.133	0.581
57520	1 ^{1/4}	1.660	0.140	0.786

The 5052 is alloyed with 2.5% magnesium. Tensile strength range 31,000 to 44,000 psi. It has very good corrosion resistance, strength, weldability, and workability. It is used for aircraft fuel tanks, utensils, appliance liners, mounting plates, blades, and storm shutters. It conforms to the federal specifications QQ-A-250/8 and ASTM B-209.

The 3003 (UNS A93003) is alloyed with 1.2% manganese to provide a tensile strength range of 17,000 to 30,000 psi. It has excellent workability, weldability and does not corrode easily. It is used for drawing, spinning, fuel tanks, sheet metal work and other jobs that need a slightly higher strength than 1100. It conforms to federal specification QQ-A-250/2 and ASTM B-209.

SCH 10 LITE WALL PIPE**A500 GRB**

Stock Lengths 21'



SCF STOCK #	SIZE IN INCHES (ID)	OUTSIDE DIA (OD)	WALL THICKNESS	WT / FT IN LBS
31506	1	1.315	0.109	1.40
31514	1 ^{1/4}	1.660	0.109	1.80
31530	2	2.375	0.109	2.63

SCH 40 STAINLESS PIPE**Type 304 SCH 40**

Stock Lengths 20'



SCF STOCK # FOR STRUCTURAL	PIPE SIZE	OUTSIDE DIA (OD)	WALL THICKNESS	WT / FT IN LBS
38312	1/2	0.840	0.109	0.851
38320	3/4	1.050	0.113	1.131
38338	1	1.315	0.133	1.679
38346	1 ^{1/4}	1.660	0.140	2.273
38354	1 ^{1/2}	1.900	0.145	2.718
38362	2	2.375	0.154	3.653

SCH 40 - STRUCTURAL PIPE

Stock Lengths 21'



SCF STOCK # FOR STRUCTURAL	PIPE SIZE	OUTSIDE DIA (OD)	WALL THICKNESS	WT / FT IN LBS
31653	1/2	0.840	0.109	0.85
31661	3/4	1.050	0.113	1.13
31679	1	1.315	0.133	1.68
31687	1 ^{1/4}	1.660	0.140	2.27
31695	1 ^{1/2}	1.900	0.145	2.72
31700	2	2.375	0.154	3.65
31718	2 ^{1/2}	2.875	0.203	5.79
31726	3	3.500	0.216	7.58
31734	3 ^{1/2}	4.000	0.226	9.11
31742	4	4.500	0.237	10.79
31753	5	5.563	0.258	14.62
31768	6	6.625	0.280	18.97
31772	8	8.625	0.3220	28.55

STANDARD - TESTED PIPE

Stock Lengths 21'



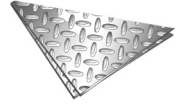
SCF STOCK # FOR TESTED	PIPE SIZE	OUTSIDE DIA (OD)	WALL THICKNESS	WT / FT IN LBS
31213	1/4	0.540	0.088	0.42
31221	3/8	0.675	0.091	0.56
31239	1/2	0.840	0.109	0.85
31247	3/4	1.050	0.113	1.13
31255	1	1.315	0.133	1.68
31263	1 ^{1/4}	1.660	0.140	2.27
31271	1 ^{1/2}	1.900	0.145	2.72
31289	2	2.375	0.154	3.65
31297	2 ^{1/2}	2.875	0.203	5.79
31302	3	3.500	0.216	7.58
31310	3 ^{1/2}	4.000	0.226	9.11
31328	4	4.500	0.237	10.79
31336	5	5.563	0.258	14.62

PLATES

ALUMINUM TREAD BRITE

3003

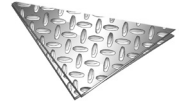
SCF STOCK #	SIZE	WIDTH IN INCHES	LENGTH IN INCHES	WT PER SQ. FT.
57921	0.063	48	144	0.964
57900	0.125	48	96	1.920
57914	0.188	48	96	2.82
57910	0.188	48	192	2.82



FLOOR PLATES

A36

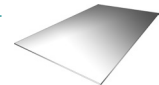
SCF STOCK #	SIZE	WIDTH IN INCHES	LENGTH IN INCHES	WT PER SQ FT
24020	14 GA	48	96	3.75
24038		48	120	3.75
24119	12 GA	48	96	5.25
24169		48	120	5.25
24185		60	120	5.25
24321	1/8	48	96	6.16
24339		48	120	6.16
24354		60	96	6.16
24371		60	120	6.16
24390		60	144	6.16
24402		72	96	6.16
24410		72	120	6.16
24428		72	144	6.16
24452	3/16	48	96	8.71
24460		48	120	8.71
24509		60	120	8.71
24541		72	120	8.71
24583	1/4	48	96	11.26
24591		48	120	11.26
24630		60	120	11.26
24672		72	120	11.26

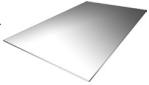


ALUMINUM PLATES

3003-H14

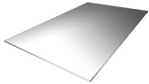
SCF STOCK #	SIZE	WIDTH IN INCHES	LENGTH IN INCHES	WT PER SQ FT
57809	.250	48	120	3.564
57812	.250	48	144	3.564



HIGH STRENGTH PLATES**A572 GR 50**


SCF STOCK #	SIZE	WIDTH IN INCHES	LENGTH IN INCHES	WT PER SQ FT
27724	1/4	60	120	10.21
27733		96	240	10.21
27711	3/16	60	120	7.66
27793	5/16	96	240	12.76
27797	5/16	72	120	12.76
27811	3/8	48	120	15.32
27945	1/2	48	120	15.32
28016	5/8	96	240	25.35
28009	5/8	72	240	25.35
28079	3/4	72	240	30.63
28085	3/4	96	240	30.63
28088	7/8	96	240	35.74
28102	1	96	240	40.84
28110	1 ^{1/8}	96	240	45.95
28113	1 ^{1/4}	96	240	51.05
28139	1 ^{1/2}	96	240	61.26
28143	1 ^{3/4}	96	240	71.47
28155	2	96	120	81.68

The INX 50, EX-TEN 50 or ASTM A572 (50) are available at a strength level of 50,000 psi minimum. They provide high strength, good workability and weldability. The atmospheric corrosion resistance is the same as that of plain carbon steel. It conforms to ASTM A572, SAE J410, Gr. 950X. Most material is certified to A709 Gr. 50 for bridge specifications.

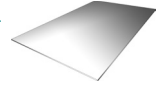
HOT ROLLED PLATES**A36 Carbon Steel**


SCF STOCK #	SIZE	WIDTH IN INCHES	LENGTH IN INCHES	WT PER SQ FT
19651	3/16	48	96	7.66
19724		72	240	7.66
19821		96	240	7.66
20017	1/4	48	96	10.21
20018		48	120	10.21
20025		60	96	10.21
20030		60	120	10.21
20041		60	240	10.21
20092		72	240	10.21
20199		96	240	10.21
20440	5/16	72	240	12.76
20521		96	240	12.76
20717	3/8	48	96	15.32
20720		48	120	15.32
20741		60	240	15.32

We have the capabilities to shear, flame cut and plasma cut hot rolled plates.
See our capabilities on pages 2-4.

HOT ROLLED PLATES

A36 Carbon Steel



SCF STOCK #	SIZE	WIDTH IN INCHES	LENGTH IN INCHES	WT PER SQ FT
20732		60	120	15.32
20791		72	240	15.32
20903		96	240	15.32
21006	1/2	48	96	20.42
21014		48	120	20.42
21071		60	120	20.42
21080		60	240	20.42
21145		72	240	20.42
21250		96	240	20.42
21593	5/8	96	240	25.53
21674	3/4	48	96	30.63
21828		72	240	30.63
21933		96	240	30.63
22230	1	48	96	40.84
22418		96	240	40.84
22523	1 ^{1/8}	96	240	45.95
22604	1 ^{1/4}	96	240	51.05
22646	1 ^{3/8}	96	240	56.16
22701	1 ^{1/2}	96	240	61.26
22810	1 ^{3/4}	96	240	71.47
22840	2	72	240	81.68
23105	2 ^{1/2}	96	120	102.10
23171	2 ^{3/4}	72	120	112.31
23244	3	96	120	122.52

MINIMUM MECHANICAL PROPERTIES

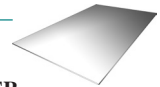
	Yield Point psi	Tensile Strength psi	Cold Formability to .180"
A569 (Low Carbon Comm. Qual).	38,000*	52,000*	1T
A607 GR 45 - INX 45	45,000	60,000	1T
GR 50 - INX 50/ EX-TEN 50	50,000	65,000	1 ^{1/2} T
A606 Type 4 (Cor-Ten)	50,000	70,000	2T**
A715 (HI-FORM) Grade 50	50,000	60,000	1 ^{1/2} T
Grade 80	80,000	90,000	1 ^{1/2} T

* Typical

**Thickness over .0625"

STAINLESS STEEL PLATES

Type 304

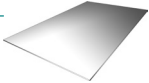


SCF STOCK #	SIZE	WIDTH IN INCHES	LENGTH IN INCHES	WT PER SQ FT	WT PER PLATE
38833	1/4	48	120	11.16	446.4

SHEETS

ALUMINUM SHEETS

5052-H32

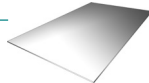


SCF STOCK #	SIZE	WIDTH IN INCHES	LENGTH IN INCHES	WT PER SQ FT
57700	.050	48	120	0.698
57710	.063	48	120	0.880
57720	.090	48	120	1.257
57730	.125	48	120	1.746
57740	.190	48	120	2.654

The 6061 is alloyed with 1.0% magnesium and .6% silicon. It has a tensile strength range of 20,000 to 42,000 psi. It has good formability, weldability, and it has corrosion resistance. It is used for engineering and structural jobs, furniture, cars, buses, and boats. It conforms to the Federal specification QQ-A-250/11 and ASTM B-209.

COLD ROLLED SHEETS

CQ/A366

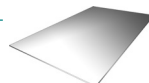


SCF STOCK #	SIZE	WIDTH IN INCHES	LENGTH IN INCHES	WT PER SQ FT
45218	14 GA	48	120	3.125
45482	16 GA	48	96	2.500
45474		48	120	2.500
45589	18 GA	48	96	2.000
45571		48	120	2.000
45560		60	120	2.000
45686	20 GA	48	96	1.500
45678		48	120	1.500
47581	22 GA	48	96	1.250

Cold rolled sheets are a low carbon steel. It has closer thickness tolerance and a better surface than pickled and oiled. The matte finish is ideal for paints, enamels and lacquers. Soft enough to bend flat on itself in any direction without cracking and it is ductile enough for many drawing applications. This steel can be electroplated. Light oil will protect this surface from rust. It conforms to ASTM A-366. The maximum carbon content is .10 for improved welding and forming. For use in making bodies of vehicles, appliances, and furniture.

GALVANIZED SHEETS

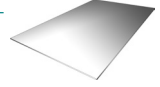
A526/A527



SCF STOCK #	THICKNESS GAGE	WIDTH IN INCHES	LENGTH IN INCHES	WT PER SQ FT
35720	10 GA	48	96	5.781
35738		48	120	5.781
35770	11 GA	48	120	5.156
35827	12 GA	48	96	4.531
35835		48	120	4.531
35893	14 GA	48	96	3.281
35908		48	120	3.281

GALVANIZED SHEETS

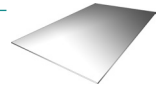
A526/A527



SCF STOCK #	THICKNESS GAGE	WIDTH IN INCHES	LENGTH IN INCHES	WT PER SQ FT
35966	16 GA	48	96	2.656
35974		48	120	2.656
36035	18 GA	48	96	2.156
36043		48	120	2.156
36108	20 GA	48	96	1.656
36116		48	120	1.656
36182	22 GA	48	120	1.406
36221	24 GA	36	96	1.156
36247		48	96	1.156

HOT ROLLED SHEETS

CQ/A569

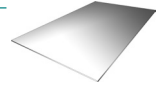


SCF STOCK #	SIZE	WIDTH IN INCHES	LENGTH IN INCHES	WT PER SQ FT
44884	7 GA	48	96	7.500
44876		48	120	7.500
44850		60	96	7.500
44842		60	120	7.500
44826		72	96	7.500
44818		72	120	7.500
44800		72	144	7.500
44981	10 GA	48	96	5.625
44973		48	120	5.625
44957		60	96	5.625
44949		60	120	5.625
44923		72	96	5.625
44915		72	120	5.625
44907		72	144	5.625
45084		48	96	5.000
45076		48	120	5.000
45050		60	96	5.000
45042		60	120	5.000
45018		72	120	5.000
45009	11 GA	72	144	5.000
45181		48	96	4.375
45173		48	120	4.375
45164	12 GA	48	144	4.375
45157		60	96	4.375
45149		60	120	4.375
45131		60	144	4.375
45123		72	96	4.375
45115		72	120	4.375
45107		72	144	4.375

We have the capabilities to shear, flame cut and plasma cut hot rolled sheets.
See our capabilities on pages 2-4.

HOT ROLLED SHEETS

CQ/A569

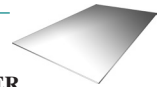


SCF STOCK #	SIZE	WIDTH IN INCHES	LENGTH IN INCHES	WT PER SQ FT
45288	14 GA	48	96	3.125
45270		48	120	3.125
45254		60	96	3.125
45246		60	120	3.125
45238		60	144	3.125
45220		72	96	3.125
45212		72	120	3.125
45204		72	144	3.125
45385	16 GA	48	96	2.500
45377		48	120	2.500
45369		48	144	2.500
45351		60	96	2.500
45343		60	120	2.500

Hot rolled sheets are a low carbon, low cost steel sheet, soft enough to bend flat on itself in any direction without cracking, ductile enough for shallow drawing. Carbon is .10 maximum for improved welding and forming. The surface has a normal mill oxide. This conforms to ASTM A-569. It can be used for tanks and other applications where the surface's finish is not critical.

STAINLESS STEEL SHEETS

Type 304-2B



SCF STOCK #	SIZE	WIDTH IN INCHES	LENGTH IN INCHES	WT PER SQ FT	WT PER PLATE
39180	7 GA	48	120	7.87	315
39245	10 GA	48	96	5.67	181
39253		48	120	5.67	227
39279		60	120	5.67	284
39300	11 GA	48	120	5.04	202
39384	12 GA	48	96	4.41	141
39392		48	120	4.41	176
39407		60	96	4.41	176
39415		60	120	4.41	221
39457	14 GA	48	96	3.15	101
39465		48	120	3.15	126
39481		60	120	3.15	158
39520	16 GA	48	96	2.520	81
39538		48	120	2.520	101
39596	18 GA	48	96	2.016	65
39601		48	120	2.016	81
39669	20 GA	48	96	1.512	48
39716	22 GA	48	96	1.260	40

The 304 is the most widely used of the stainless and heat resisting steels. It does not corrode easily with many chemical corrodents as well as industrial atmospheres. It has very good formability and can be welded by all common methods. The 304 Product offers an improved machinability.

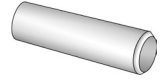
ROUNDS

COLD ROLLED ROUNDS

C1018

Stock Lengths 20'

* 1045 Available



PRODUCTS - ROUNDS

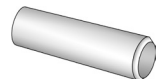
SCF STOCK #	SIZE IN INCHES	WT. / FT.
34059	1/4	0.167
34080	5/16	0.261
34091	3/8	0.376
34112	7/16	0.511
34130	1/2	0.668
34156	9/16	0.845
34172	5/8	1.043
34211	3/4	1.500
34253	7/8	2.045
34287	15/16	2.350
34295	* 1	2.670
34334	1 ¹ / ₈	3.380
34350	1 ³ / ₁₆	3.770
34376	* 1 ¹ / ₄	4.170
34415	1 ³ / ₈	5.050
34431	1 ⁷ / ₁₆	5.520
34457	* 1 ¹ / ₂	6.010
34473	1 ⁵ / ₈	7.050
34512	1 ³ / ₄	8.180
34554	1 ¹⁵ / ₁₆	10.020
34570	2	10.680
34619	2 ³ / ₁₆	12.780
34635	2 ¹ / ₄	13.520
34677	2 ⁷ / ₁₆	15.870
34693	2 ¹ / ₂	16.690
34774	2 ¹⁵ / ₁₆	23.040
34790	3	24.030
34813	3 ¹ / ₂	32.710
34766	3 ⁷ / ₁₆	31.550

The 1018 and 1020 (HR,CF) is a low carbon steel with a medium manganese content. It has good hardening properties and fair machinability. It is readily brazed and welded. It is good for shafting and for applications that do not require the greater strength of high carbon and alloy steels. It conforms to ASTM A-108 and AMS 5069.

ALUMINUM ROUNDS

6061-T6

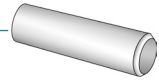
Stock Lengths 12'



SCF STOCK #	SIZE IN INCHES	WT. / FT.
57206	3/8	0.130
57214	1/2	0.230
57221	3/4	0.519

GALVANIZED ROUNDS

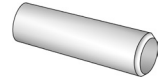
A36
Stock Lengths 20'



SCF STOCK #	SIZE IN INCHES	WT. / FT.
37227	3/8	0.40
37235	1/2	0.70

HOT ROLLED ROUNDS

A36
Stock Lengths 20'
 * 12' Only

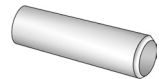


SCF STOCK #	SIZE IN INCHES	WT. / FT.
43406	3/16 *	0.094
5018	1/4	0.167
5026	5/16	0.261
5034	3/8	0.376
5042	7/16	0.511
5050	1/2	0.668
5068	9/16	0.845
5076	5/8	1.043
5092	3/4	1.500
5115	7/8	2.044
5131	1	2.670
5173	1 ^{1/4}	4.170
5212	1 ^{1/2}	6.010
5254	2	10.680

The A36 (HR) bars are designed for structural use. There are minimal physical properties of 36 KSI yield strength and 58 KSI tensile strength.

STAINLESS ROUNDS

Type 304
Stock Lengths 12' R/L

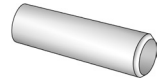


SCF STOCK #	SIZE IN INCHES	WT. / FT.
37502	3/16	0.09
37510	1/4	0.17
37528	5/16	0.26
37536	3/8	0.38
37540	7/16	0.511
37544	1/2	0.67
37560	5/8	1.04
37578	3/4	1.50
37609	1	2.67
37659	1 ^{1/2}	6.01

STRESSPROOF ROUNDS

C1144

Stock Lengths 12' R/L



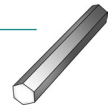
SCF STOCK #	SIZE IN INCHES	WT. / FT.
35055	1/2	0.668
35089	3/4	1.50
35102	7/8	2.05
35128	1	2.67
35144	1 ^{1/8}	3.38
35160	1 ^{1/4}	4.17
35186	1 ^{3/8}	5.05
35194	1 ^{7/16}	5.52
35209	1 ^{1/2}	6.01
35217	1 ^{5/8}	7.05
35225	1 ^{3/4}	8.18
35241	1 ^{15/16}	10.02
35259	2	10.68
35275	2 ^{3/16}	12.78
35283	2 ^{1/4}	13.52
35314	2 ^{7/16}	15.87
35322	2 ^{1/2}	16.69
35348	2 ^{3/4}	20.19
35364	2 ^{15/16}	23.04
35372	3	24.03
35403	4	42.73

The 1144 (HR, CF) is similar to the 1141 with a slightly higher carbon and sulphur content which results in superior machinability and improved response to heat treating. It is often used for the induction of hardened parts that require 55 RC surface.

HEXAGONS**COLD ROLLED HEXAGONS**

C1018

Stock Lengths 12' R/L



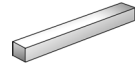
SCF STOCK #	SIZE IN INCHES	WT. / FT.
33956	7/16	0.564
33975	11/16	1.392
34025	1 ^{1/8}	3.727

SQUARES

COLD ROLLED SQUARES

C1018

Stock Lengths 12' R/L

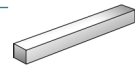


SCF STOCK #	SIZE IN INCHES	WT. / FT.
34889	1/2	0.850
34928	5/8	1.328
34960	3/4	1.913
35005	7/8	2.603
35021	1	3.400
35039	1 ^{1/2}	7.660

HOT ROLLED SQUARES

A36

Stock Lengths 20'



SCF STOCK #	SIZE IN INCHES	WT. / FT.	WT. / 20'
6022	3/8	0.48	9.56
6048	1/2	0.85	17.00
6080	3/4	1.91	38.20
6129	1	3.40	68.00
6145	1 ^{1/4}	5.31	106.20
6161	1 ^{1/2}	7.65	153.00

REBAR

GRADE 40 REBAR

A615

Stock Lengths 20'



SCF STOCK #	SIZE IN INCHES	WT. / FT.	WT. / 20'
55711	NO. 3	0.376	7.52
55732	NO. 4	0.668	13.36
55743	NO. 5	1.043	20.86

GRADE 60 REBAR

A615

Stock Lengths 20'



SCF STOCK #	SIZE IN INCHES	WT. / FT.	WT. / 20'
56112	NO. 4	0.668	13.36
56124	NO. 5	1.043	20.86
56136	NO. 6	1.502	30.04

PRODUCTS - SQUARES & REBAR

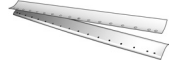
We have the capabilities to bundle and saw cut stainless rounds, hexagons and cold finished squares. See our capabilities on pages 2-4.

STRIPS

SINGLE BEVEL CUTTING EDGE

.50/.60C

Stock Lengths 17' - 22' R/L



SCF STOCK #	SIZE IN INCHES			WT. / FT.	WT. / 20'
30798	3/8	X	3	3.329	68.24
30801	1/2	X	4	6.04	123.82
30827	1/2	X	6	9.45	180.31
30843	5/8	X	6	11.55	197.27
30869	3/4	X	6	13.60	248.20
30885	3/4	X	8	18.41	332.85

GALVANIZED STRIPS

Stock Lengths 20'



SCF STOCK #	SIZE IN INCHES			WT. / FT.	WT. / 20'
36899	3/16	X	4	2.68	53.6

HOT ROLLED STRIPS

CQ-A36

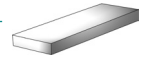
Stock Lengths 20'



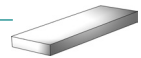
SCF STOCK #	SIZE IN INCHES			WT. / FT.	WT. / 20'
602	1/8	X	1/2	0.213	4.26
628			3/4	0.319	6.38
644			1	0.425	8.50
660			1 ^{1/4}	0.531	10.62
686			1 ^{1/2}	0.638	12.76
709			2	0.850	17.00
725			2 ^{1/2}	1.060	21.20
741			3	1.280	25.60
767			3 ^{1/2}	1.490	29.80
775			4	1.700	34.00
791			5	2.130	42.60
814			6	2.550	51.00
830			8	3.400	68.00
848			10	4.250	85.00
856			12	5.100	102.00
880	3/16	X	3/4	0.478	9.56
903			1	0.638	12.76
929			1 ^{1/4}	0.797	15.94
937			1 ^{1/2}	0.956	19.12
945			1 ^{3/4}	1.120	22.40

HOT ROLLED STRIPS**CQ-A36****Stock Lengths 20'**

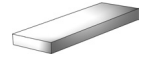
SCF STOCK #	SIZE IN INCHES	WT. / FT.	WT. / 20'
953	2	1.280	25.60
979	2 ^{1/2}	1.590	31.80
995	3	1.910	38.20
1014	3 ^{1/2}	2.230	44.60
1022	4	2.550	51.00
1048	5	3.190	63.80
1064	6	3.830	76.60
1080	8	5.100	102.00
1098	10	6.380	127.60
1103	12	7.650	153.00

FLATS**ALUMINUM FLATS****6061-T6****Stock Lengths 12'**

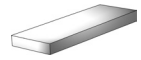
SCF STOCK #	SIZE IN STOCK	WT. / FT.
56901	1/8 X 1	0.150
56905	1 ^{1/2}	0.220
56909	2	0.094
56913	3	0.441
56917	4	0.558
57100	1/4 X 1	0.294
57108	1 ^{1/2}	0.441
57116	2	0.588
57124	2 ^{1/2}	0.735
57132	3	0.882
57140	4	1.176
57148	3/8 X 1 ^{1/2}	0.661
57156	2	0.882
57164	2 ^{1/2}	1.101
57172	3	1.323
57180	4	1.764

COLD ROLLED FLATS**C1018****Stock Lengths 12'**

SCF STOCK #	SIZE IN INCHES	WT. / FT.	WT. / 20'
34041	1/4 X 1	0.850	10.2

GALVANIZED FLATS**A36****Stock Lengths 20'**

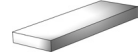
SCF STOCK #	SIZE IN INCHES		WT. / FT.	WT. / 20'	
36996	1/4		1 ^{1/2}	1.34	26.80
37015	1/4		2	1.79	35.80
37031	1/4		3	2.68	53.60
37057	1/4		4	3.57	71.40
37073	1/4		6	5.35	107.00
37162	1/2	X	2 ^{1/2} REO	4.49	89.80

HOT ROLLED FLATS**A36****Stock Lengths 20'**

SCF STOCK #	SIZE IN INCHES		WT. / FT.	WT. / 20'	
1187	1/4	X	3/4	0.638	12.76
1200			1	0.850	17.00
1226			1 ^{1/4}	1.060	21.20
1242			1 ^{1/2}	1.280	25.60
1268			1 ^{3/4}	1.490	29.80
1276			2	1.700	34.00
1292			2 ^{1/2}	2.130	42.60
1315			3	2.550	51.00
1331			3 ^{1/2}	2.980	59.60
1357			4	3.400	68.00
1373			4 ^{1/2}	3.830	76.60
1381			5	4.250	85.00
1404			6	5.100	102.00
1412			7	5.950	119.00
1438			8	6.800	136.00
1462			10	8.510	170.20
1470			12	10.210	204.20
1543	5/16		2	2.13	42.60
1585	5/16		3	3.19	63.80
1713	3/8	X	1	1.28	25.60
1739			1 ^{1/4}	1.59	31.80
1755			1 ^{1/2}	1.91	38.20
1789			1 ^{3/4}	2.23	44.60
1802			2	2.55	51.00
1828			2 ^{1/2}	3.19	63.80
1844			3	3.83	76.60
1860			3 ^{1/2}	4.46	89.20
1878			4	5.10	102.00
1894			5	6.38	127.60
1917			6	7.65	153.00

HOT ROLLED FLATS

**A36
Stock Lengths 20'**

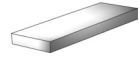


SCF STOCK #	SIZE IN INCHES			WT. / FT.	WT. / 20'
1925			7	8.93	178.60
1933			8	10.20	204.00
1941			10	12.77	255.40
1959			12	15.32	306.40
2117	1/2	X	3/4	1.275	25.50
2133	1/2	X	1	1.70	34.00
2159			1 ^{1/4}	2.13	42.60
2175			1 ^{1/2}	2.55	51.00
2191			1 ^{3/4}	2.98	59.60
2206			2	3.40	68.00
2222			2 ^{1/2}	4.25	85.00
2230	A-36REO		2 ^{1/2}	4.25	85.00
2256			3	5.10	102.00
2272			3 ^{1/2}	5.95	119.00
2298			4	6.80	136.00
2311			5	8.50	170.00
2337			6	10.20	204.00
2345			7	11.90	238.00
2353			8	13.60	272.00
2379			10	17.02	340.40
2387			12	20.42	408.40
2450	5/8	X	2	4.25	85.00
2476			2 ^{1/2}	5.31	106.20
2492			3	6.38	127.60
2523			4	8.50	170.00
2565			6	12.75	255.00
2581			8	17.00	340.00
2638	3/4	X	1 ^{1/2}	3.83	76.60
2662			2	5.10	102.00
2688			2 ^{1/2}	6.38	127.60
2701			3	7.65	153.00
2718			3 ^{1/2}	8.93	178.60
2735			4	10.20	204.00
2751			5	12.75	255.00
2777			6	15.30	306.00
2808			8	17.00	340.00
2816			10	25.52	510.40
2832			12	30.63	612.60
3008	1	X	2	6.80	136.00
3024			2 ^{1/2}	8.50	170.00
3040			3	10.20	204.00
3074			4	13.60	272.00
3105			5	17.00	340.00
3121			6	20.40	408.00
3147			8	27.20	544.00

PRODUCTS - FLATS

STAINLESS FLATS

Stock Lengths 12' R/L



SCF STOCK #	SIZE IN INCHES			WT. / FT.
38053	1/8	X	1	0.425
38087			1 ^{1/4}	0.531
38061			1 ^{1/2}	0.638
38079			2	0.85
38095			3	1.28
38231			4	1.70
38257			6	2.55
38100	3/16	X	1	0.638
38304			1 ^{1/4}	0.797
38118			1 ^{1/2}	0.956
38126			2	1.28
38265			4	2.55
38150	1/4	X	1	0.85
38249			1 ^{1/4}	1.06
38168			1 ^{1/2}	1.28
38176			2	1.70
38184			2 ^{1/2}	2.13
38192			3	2.550
38207			4	3.40
38281			6	5.100
38306	3/8	X	1 ^{1/2}	1.913
38308	1	X	2	2.550

TUBING**ALUMINUM SQUARE TUBING**

6063-T52

Stock Lengths 21'-1"



SCF STOCK #	SIZE IN INCHES			WALL THICKNESS	WT. / FT.
57603	1	X	1	0.125	0.515
57611	1 ^{1/2}	X	1 ^{1/2}	0.125	0.809
57619	2	X	2	0.125	1.103

HIGH-STRENGTH ROUND TUBING

A500 GR B

Stock Lengths 21'

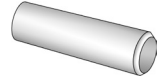


SCF STOCK #	OUTSIDE INCHES (OD)	INSIDE DIA (ID)	WALL THICKNESS	WT. / FT. IN LBS
33702	0.840	0.674	0.083	0.671
33728	1.050	0.884	0.083	0.869
33744	1.315	1.149	0.083	1.090
33760	1.660	1.494	0.083	1.400
33786	1.900	1.734	0.083	1.612

We have the capabilities to shear, flame cut, plasma cut, laser cut and saw cut stainless flats.
See our capabilities on pages 2-4.

HREW ROUND AUGER TUBING

Stock Lengths 20' & 40'



SCF STOCK #	SIZES IN INCHES		WALL THICKNESS	WT. / FT.
500100	4 OD	X	14 GA WALL	3.472
500104	6 OD	X	12 GA WALL	6.858
500115	8 OD	X	14 GA WALL	7.018
500118	8 OD	X	12 GA WALL	9.186
500121	8 OD	X	7 GA WALL	15.600
500130	10 OD	X	12 GA WALL	11.500
500132	10 OD	X	10 GA WALL	14.120
500134	10 OD	X	7 GA WALL	19.720
500142	12 OD	X	10 GA WALL	16.980

RECTANGULAR TUBING

A513/A500 GR B

Stock Lengths 24'

* = AVAILABLE IN 40'



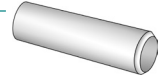
SCF STOCK #	SIZES IN INCHES			WALL THICKNESS	WT. / FT.
32976	1 ^{1/2}	X	1	0.083	1.320
33003	2	X	1	0.083	1.600
33037	2	X	1	0.120	2.252
33084	2	X	1 ^{1/2}	0.083	1.880
33095	2	X	1 ^{1/2}	0.120	2.660
33126	2 ^{1/2}	X	1 ^{1/2}	0.083	2.164
33130	2 ^{1/2}	X	1 ^{1/2}	0.120	3.070
33184				0.188	4.320
33249	3	X	1	0.120	3.070
33201	3	X	1 ^{1/2}	0.083	2.390
33207				0.120	3.480
33215				0.188	4.960
33265	3	X	2	0.083	2.670
33273				0.120	3.900
33304				0.188	5.590
33320				0.250	7.110
33346	4	X	2	0.120	4.750
33362				0.188	6.780
33396				0.250	8.810
33427	4	X	3	0.188	8.150
33451				0.250	10.510
33458				0.375	14.710
33460	5	X	2	0.120	5.610
33465				0.188	8.150
33477	5	X	3	0.188	9.420
33508 *				0.250	12.210
33517	5	X	3	0.375	17.270
33522	6	X	2	0.120	6.460
33532	6	X	2	0.188	9.420
33566				0.250	12.210

RECTANGULAR TUBING**A513/A500 GR B****Stock Lengths 24' & 40'**

* = AVAILABLE IN 40' / ** = 40' ONLY



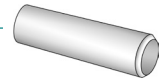
SCF STOCK #	SIZES IN INCHES			WALL THICKNESS	WT. / FT.
33590	6	X	3	0.188	10.70
33605				0.250	13.91
33612				0.375	19.82
33647 *	6	X	4	0.188	11.97
33671 *				0.250	15.62
33674	6	X	4	0.375	22.37
33675 *	8	X	4	0.250	19.02
33676 **	8	X	4	0.375	27.48
33623 **	8	X	3	0.250	17.32

ROUND MECHANICAL TUBING**A513****Stock Lengths 20'**

SCF STOCK #	SIZES IN INCHES			WT. / FT. lbs.	WT. / EA.
33677	1	OD X	.083	0.813	16.260
33679	1	OD X	.120	1.128	22.560
33683	1 ^{1/4}	OD X	.083	1.034	20.680
33685	1 ^{1/4}	OD X	.120	1.448	28.960
33689	1 ^{1/2}	OD X	.083	1.256	25.120
33691	1 ^{1/2}	OD X	.120	1.769	35.380
33696	2	OD X	.083	1.699	33.980
33698	2	OD X	.120	1.769	48.180

ROUND REPAIR TUBING (BUSHING STOCK)**A513****Stock Lengths 60"**

Pre-bored out so shafting will fit instantly inside.



SCF STOCK #	1/8" WALL			SCF STOCK #	1/4" WALL		
33840	3/4	OD X	1/2 ID	33880	1 ^{1/8}	OD X	5/8 ID
33842	7/8	OD X	5/8 ID	33882	1 ^{1/4}	OD X	3/4 ID
33844	1	OD X	3/4 ID	33884	1 ^{3/8}	OD X	7/8 ID
33846	1 ^{1/8}	OD X	7/8 ID	33886	1 ^{1/2}	OD X	1 ID
33848	1 ^{1/4}	OD X	1 ID	33888	1 ^{5/8}	OD X	1 ^{1/8} ID
33852	1 ^{1/2}	OD X	1 ^{1/4} ID	33892	1 ^{7/8}	OD X	1 ^{3/8} ID
33854	1 ^{5/8}	OD X	1 ^{3/8} ID	33894	2	OD X	1 ^{1/2} ID
33856	1 ^{3/4}	OD X	1 ^{1/2} ID	33896	2 ^{1/8}	OD X	1 ^{5/8} ID
33858	1 ^{7/8}	OD X	1 ^{5/8} ID	33898	2 ^{1/4}	OD X	1 ^{3/4} ID
33860	2	OD X	1 ^{3/4} ID	33900	2 ^{1/2}	OD X	2 ID
33862	2 ^{1/4}	OD X	2 ID				

STAINLESS TUBING

Type 304

Stock Lengths 20' R/L



SCF STOCK #	SIZES IN INCHES			WALL THICKNESS	WT. / FT.
38524	1	X	1	0.065	0.826
38516				0.120	1.440
38532	1 ^{1/4}	X	1 ^{1/4}	0.120	1.844
38590	1 ^{1/2}	X	1 ^{1/2}	0.083	1.600
38558				0.120	2.250
38574	2	X	2	0.120	3.070
38621				0.180	4.460

The Structural ASTM A500-Grade B is cold formed, electric resistance and welded tubing. It has a high strength-to-weight ratio. It is easily welded, formed, punched and drilled. The hollow shape offers good appearance and ease of maintenance.

SQUARE TUBING

A513/A500 GR B

Stock Lengths 24'

* = 20' ONLY / ** = AVAILABLE IN 40'



SCF STOCK #	SIZES IN INCHES			WALL THICKNESS	WT. / FT.
31790	1/2	X	1/2	0.065	0.384
31792 *	3/4	X	3/4	0.065	0.605
31798 *	3/4	X	3/4	0.083	0.753
31807				0.120	1.028
31815	1	X	1	0.065	0.827
31849				0.072	0.909
31881				0.083	1.040
31920				0.120	1.440
31962	1 ^{1/4}	X	1 ^{1/4}	0.065	1.050
32015				0.083	1.320
32057				0.120	1.840
32099				0.188	2.400
32114	1 ^{1/2}	X	1 ^{1/2}	0.065	1.269
32138				0.083	1.600
32170				0.120	2.250
32219				0.188	3.040
32227				0.250	4.000
32243	1 ^{3/4}	X	1 ^{3/4}	0.083	1.822
32251				0.120	2.660
32293	2	X	2	0.083	2.160
32332				0.120	3.070
32413				0.188	4.320
32455				0.250	5.410
32497	2 ^{1/2}	X	2 ^{1/2}	0.120	3.900
32536				0.188	5.590
32578				0.250	7.110
32617 **	3	X	3	0.120	4.750

SQUARE TUBING**A513/A500 GR B****Stock Lengths 24'****** = AVAILABLE IN 40'**

SCF STOCK #	SIZES IN INCHES			WALL THICKNESS	WT. / FT.
32659	3	X	3	0.188	6.87
32691 **				0.250	8.81
32712	3	X	3	0.375	12.16
32730	3 ^{1/2}	X	3 ^{1/2}	0.188	8.15
32772	3 ^{1/2}	X	3 ^{1/2}	0.250	10.51
32798	4	X	4	0.120	6.46
32811 **	4	X	4	0.188	9.42
32853 **	4	X	4	0.250	12.21
32860	4	x	4	0.375	17.27
32887	5	X	5	0.188	11.97
32900 **				0.250	15.62
32934 **	6	X	6	0.250	19.02
32947 **	6	X	6	0.375	27.48
32959 **	8	X	8	0.250	25.82
32964 **	8	X	8	0.375	37.69

GALVANIZED TUBING**A500****Stock Lengths 24'**

SCF STOCK #	SIZES IN INCHES			WALL THICKNESS	WT. / FT.
37400	1 ^{1/2}	X	1 ^{1/2}	0.120	2.362
37403	2	X	2	0.120	3.224

HELPFUL INFORMATION

To find the circumference of a circle, multiply diameter by 3.1416.

To find the diameter of a circle, multiply circumference by .31831.

To find the area of a circle, multiply square of diameter by .7854.

To find the area of a rectangle = length multiplied by breadth. Doubling the diameter of a circle increases its area four times.

To find the area of a triangle, multiply base by $\frac{1}{2}$ perpendicular height.

To find the area of an ellipse = product of both diameters times .7854.

To find the area of a parallelogram = base times altitude.

To find the side of an inscribed square, multiply diameter by 0.7071 or multiply circumference by 0.2251 or divide circumference by 4.4428.

To find the side of an inscribed cube = radius of sphere times 1.1547.

To find the side of an equal square, multiply diameter by .8862 Square. A side multiplied by 1.4142 equals the diameter of its circumscribing circle.

A side multiplied by 4.443 equals the **circumference of its circumscribing circle**.

A side multiplied by 1.128 equals the **diameter of an equal circle**.

A side multiplied by 3.547 equals the **circumference of an equal circle**.

To find the cubic inches in a ball, multiply cube of the diameter by .5236.

To find the cubic contents of a cone, multiply area of base by $\frac{1}{3}$ the altitude.

To find surface of frustrum of cone or pyramid = sum of circumference of both ends times $\frac{1}{2}$ slant height plus area of both ends.

To find contents of frustrum of cone or pyramid = multiply area of two ends and get square root. Add the 2 areas and multiply $\frac{1}{3}$ altitude.

Doubling the diameter of a pipe increases its capacity four times.

A gallon of water (U.S. Standard) weighs 8 $\frac{1}{8}$ lbs. and contains 231 cubic inches.

A cubic foot of water contains 7 $\frac{1}{2}$ gallons, 1728 cubic inches, and weighs 62 $\frac{1}{2}$ lbs. To find the **pressure in pounds per square inch of a column of water**, multiply the height of the column in feet by .434.

To find the capacity of tanks of any size, given dimensions of a cylinder in inches to find its capacity in U.S. gallons: square the diameter, multiply by the length and by .0034.

WEIGHTS & MEASURES

Apothecaries' Weight

20 grains1 scruple
3 scruples1 dram
8 drams1 ounce
12 ounces	1 lb.

OUNCE AND POUND AND GRAINS ARE THE SAME AS IN TROY WEIGHT

Avoirdupois Weight

27 $\frac{1}{32}$ grains1 dram
16 drams1 ounce
16 ounces	1 lb.
25 lbs.	1 quarter
4 quarters1 ounce
2,000 lbs.	1 short ton
2,240 lbs.	1 long ton

Troy Weight

144 sq. inches1 pwt.
20 pwt.1 ounce
12 ounces	1 lb.

FOR WEIGHING GOLD, SILVER AND JEWELS

Square Measure

144 sq. inches	1 sq. foot
9 sq. feet	1 sq. yard
30 $\frac{1}{4}$ sq. yards	1 sq. rod
40 sq. rods	1 rood
4 roods	1 acre
640 acres	1 sq. mile

Cubic Measure

1,728 cu. inches1 cu. foot
27 cu. feet	1 cu. yard
128 cu. feet1 cord (wood)
40 cu. feet	1 ton (shipping)
2,150.42 cu. in.	1 standard bushel
231 cu. in.	1 U.S. standard gal.
1 cu. foot	about $\frac{1}{4}$ of a bushel

Dry Measure

2 pints1 quart
8 quarts1 peck
4 pecks	1 bushel
36 bushels	1 chaldron

WEIGHTS & MEASURES

Liquid Measure

4 grains	1 pint
2 pints	1 quart
4 quarts	1 gallon
31½ gallons	1 barrel
2 barrels	1 hogshead

Long Measure

12 inches	1 foot
3 feet	1 yard
5 ½ yards	1 rod
40 rods	1 furlong
8 furlongs	1 sta. mile
3 miles	1 league

Surveyor's Measure

7.92 inches	1 link
25 links	1 rod
4 rods	1 chain
10 sq. chains or 160 sq. rods	1 acre
640 acres	1 sq. mile
36 sq. miles (6 miles sq.)	1 township

Paper Measure

24 sheets	1 quire
20 quires	1 ream (480 sheets)
2 reams	1 bundle
5 bundles	1 bale

METRIC EQUIVALENTS

Linear Measure

1 centimeter	0.3937 inch
1 inch	2.54 centimeters
1 decimeter	3.937 inches 0.328 foot
1 foot	3.048 decimeters
1 meter	39.37 inches 1.0936 yards
1 yard	0.9144 meter
1 dekameter	1.9884 rods
1 rod	0.5029 dekameters
1 kilometer	0.62137 m.
1 m.	1.6093 kilometers

Square Measure

1 sq. centimeter	0.1550 sq. inch
1 sq. inch	6.542 sq. centimeters
1 sq. decimeter	0.1076 sq. foot
1 sq. foot	9.2903 sq. decimeters
1 sq. meter	1.196 sq. yards
1 sq. yard	0.8361 sq. meters
1 acre	3.954 rods
1 sq. rod	0.2529 acre
1 hectare	2.47 acres
1 acre	0.4047 hectare
1 sq. kilometer	0.386 sq. m.
1 sq. m.	2.59 sq. kilometers

Weights

1 gram	0.03527 ounce
1 ounce	28.35 grams
1 kilogram	2.2046 lbs.
1 lb.	0.4536 kilograms
1 metric ton	1.1023 English tons
1 English ton	0.9072 metric ton

Make Sioux City Foundry Company your own Steel Warehouse. Because we carry such large stocks of all the most wanted items and can deliver so quickly, steel users in a five-state area have come to depend on our inventories and fast service.

— FRACTIONS | DECIMALS | MILLIMETERS —

FRAC.	DEC.	MIL.	FRAC.	DEC.	MIL.
1/64	.0156	0.3969	5/8	.6250	15.8750
1/32	.0313	0.7938	41/64	.6406	16.2719
3/64	.0469	1.1906	21/32	.6563	16.6688
1/16	.0625	1.5875	43/64	.6719	17.0656
5/64	.0781	1.9844	11/16	.6875	17.4625
3/32	.0938	2.3813	45/64	.7031	17.8594
7/64	.1094	2.7781	23/32	.7188	18.2563
1/8	.1250	3.1750	47/64	.7344	18.6531
9/64	.1406	3.5719	3/4	.7500	19.0500
5/32	.1563	3.9688	9/64	.7656	19.4469
11/64	.1719	4.3656	25/32	.7813	19.8438
3/16	.1875	4.7625	51/64	.7969	20.2406
13/64	.20315	5.1594	13/16	.8125	20.6375
7/32	.2188	5.5563	53/64	.8281	21.0344
15/64	.23445	5.9531	27/32	.8438	21.4313
1/4	.2500	6.3500	55/64	.8594	21.8281
17/64	.2656	6.7469	7/8	.8750	22.2250
9/32	.2813	7.1438	57/64	.8906	22.6219
19/64	.2969	7.5406	29/32	.9063	23.0188
5/16	.3125	7.9375	59/64	.9219	23.4156
21/64	.3281	8.3344	15/16	.9375	23.8125
11/32	.3438	8.7313	61/64	.9531	24.2094
23/64	.3594	9.1281	31/32	.9688	24.6063
3/8	.3750	9.5250	63/64	.9844	25.0031
25/64	.3906	9.9219	1	1.000	25.4000
13/32	.4063	10.3188			
27/64	.4219	10.7156			
7/16	.4375	11.1125			
29/64	.4531	11.5094			
15/32	.4688	11.9063			
31/64	.4844	12.3031			
1/2	.5000	12.7000			
33/64	.5156	13.0969			
17/32	.5313	13.4938			
35/64	.5469	13.8906			
9/16	.5625	14.2875			
37/64	.5781	14.6844			
19/32	.5938	15.0813			
39/64	.6094	15.4781			

THICKNESS TOLERANCE RANGES*

CARBON STEEL SHEETS
Hot Rolled • H R P&O • Cold Rolled

Gage No.	Thickness, inches			lbs. per sq.ft.	Gage No.	Thickness, inches			lbs. per sq.ft.
	Dec. Equiv	Toler. Range				Dec. Equiv	Toler. Range	C.R.	
		HR & P&O	C.R.	Wt. Equiv*					Wt. Equiv*
4	0.2242	0.2332 0.2152		9.375	19	0.0418	0.0458 0.0378	1.750	
5	0.2092	0.2182 0.2002		8.750	20	0.0359	0.0389 0.0329	1.500	
6	0.1943	0.2033 0.1853		8.125	21	0.0329	0.0359 0.0299	1.375	
7	0.1793	0.1873 0.1713	0.1883 0.1703	7.500	22	0.0299	0.0329 0.0269	1.250	
8	0.1644	0.1724 0.1564	0.1734 0.1554	6.875	23	0.0269	0.0299 0.0239	1.125	
9	0.1495	0.1575 0.1415	0.1585 0.1405	6.250	24	0.0239	0.0269 0.0209	1.000	
10	0.1345	0.1425 0.1265	0.1405 0.1285	5.625	25	0.0209	0.0239 0.0179	0.875	
11	0.1196	0.1276 0.1116	0.1256 0.1136	5.000	26	0.0179	0.0199 0.0159	0.750	
12	0.1046	0.1126 0.0966	0.1106 0.0986	4.375	27	0.0164	0.0184 0.0144	0.688	
13	0.0897	0.0967 0.0828	0.0947 0.0847	3.750	28	0.0149	0.0169 0.0129	0.625	
14	0.0747	0.0817 0.0677	0.0797 0.0697	3.125	29	0.0135	0.0155 0.0115	0.562	
15	0.0673	0.0733 0.0613	0.0723 0.0623	2.812	30	0.0120	0.0130 0.0110	0.500	
16	0.0598	0.0658 0.0538	0.0648 0.0548	2.500	CR*-Gauges 4 thru 10 - Tolerances shown for widths over 48" to 72" inclusive. All other gauges - Tolerances shown for widths over 15" to 72" inclusive. HR*-Gauges 4 thru 18 - Tolerances shown for widths over 40" to 48" inclusive. P&O				
17	0.0538	0.0598 0.0478	0.0548 0.0498	2.250					
18	0.0478	0.0528 0.0428	0.0518 0.0438	2.000					

THICKNESS TOLERANCE RANGES*

GALVANIZED STEEL SHEETS

Gage No.	Thickness inches		lbs. per sq.ft.	Gage No.	Thickness inches		lbs. per sq.ft.
	Dec. Equiv	Toler. Range			Dec. Equiv	Toler. Range	
10	0.1382	0.1472 0.1292	5.78125	21	0.0366	0.0406 0.0326	1.53125
11	0.1233	0.1323 0.1143	5.15625	22	0.0336	0.0376 0.0296	1.40625
12	0.1084	0.1174 0.0994	4.53125	23	0.0306	0.0346 0.0266	1.28125
13	0.0934	0.1014 0.0854	3.90625	24	0.0276	0.0316 0.0236	1.15625
14	0.0785	0.0865 0.0705	3.28125	25	0.0247	0.0287 0.0207	1.03125
15	0.0710	0.0770 0.0650	2.96875	26	0.0217	0.0247 0.0187	0.90625
16	0.0635	0.0695 0.0575	2.65625	27	0.0202	0.0232 0.0172	0.84375
17	0.0575	0.0625 0.0525	2.40625	28	0.0187	0.0217 0.0157	0.78125
18	0.0516	0.0566 0.0466	2.15625	29	0.0172	0.0202 0.0142	0.71875
19	0.0456	0.0506 0.0406	1.90625	30	0.0157	0.0187 0.0127	0.65625
20	0.0396	0.0436 0.0356	1.65625	*Gauges 10-11-12-Tolerances shown for widths over 40" to 60" inclusive. All other gauges-Tolerances shown for widths over 32" to 60" inclusive.			

STEEL SERVICE CENTER

Keith Boden, *Assistant Division Manager*

712-226-1184 | kboden@siouxcityfoundry.com

Inside Sales

888-331-4660 | sales@siouxcityfoundry.com

METAL CASTING

Dan Plesher, *Division Manager*

712-226-1272 | dplesher@siouxcityfoundry.com

Russell Vos

712-226-1283 | rvos@siouxcityfoundry.com

REINFORCING STEEL

Chris Taylor, *Administrative Manager*

712-226-1739 | ctaylor@siouxcityfoundry.com

Tristian Blanchard

712-226-1735 | tristianblanchard@siouxcityfoundry.com

CONTRACT MANUFACTURING

Benjamin Bassett, *Division Manager*

712-226-1443 | bbassett@siouxcityfoundry.com

STRUCTURAL FABRICATION - SHERMAN TANK™

Benjamin Bassett, *Division Manager*

712-226-1443 | bbassett@siouxcityfoundry.com

Since 1871

Sioux City Foundry Co.

PLANT 1

**Steel Service Center • Reinforcing Steel
Contract Manufacturing • Structural Fabrication
Sherman Tank® • Safety Gratings • Snow Pushers
Galvanized Metal Culverts • Cutting Blades
Wine Racks**

801 Division St.
Sioux City, IA 51102
800.831.0874
712.252.4181
Fax 712.252.4197

PLANT 2

Metal Casting

24th & G St.
South Sioux City, NE 68776
800.831.0874
712.252.4181
Fax 402.494.2493



www.siouxcityfoundry.com
sales@siouxcityfoundry.com

We Are Social!

