

Since 1871

Sioux City Foundry Co.

LASER CUTTING

HIGH PERFORMANCE LASERS FOR ACCURATELY FINISHED PARTS

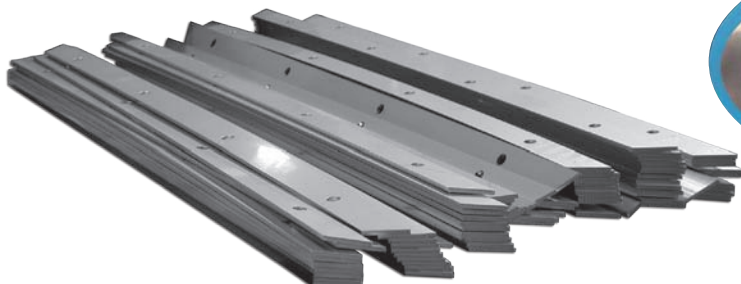
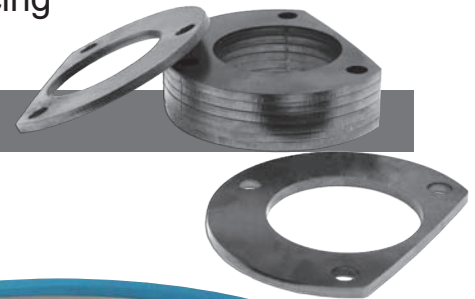


Sioux City Foundry provides fast and friendly service. From product quality to on-time delivery, customer satisfaction is our top priority. With our high performance lasers, we guarantee accurately finished parts.

- (2) Bystronic 4020 Laser Tables
- (1) Bystronic 6000 Laser Table
- 72" x 144" Bed Size
- 0.0313" to 1" thickness capacity
- Customer satisfaction is top priority
- High performance lasers
- Accurately finished parts
- Metal etching capabilities
- Fast and friendly service
- On-time delivery
- Quality cut parts
- Competitive pricing

VARIETY OF CUT MATERIALS:

- Stainless Steel
- Carbon Steel
- Galvanized Steel
- Aluminum



801 Division St. • Sioux City, Iowa 51105 • 800-831-0874 • 712-226-1325 • 712-252-4197 (fax)
www.siouxcityfoundry.com • sales@siouxcityfoundry.com

LC071614