

Since 1871

Sioux City Foundry Co.

SHERMAN TANK®

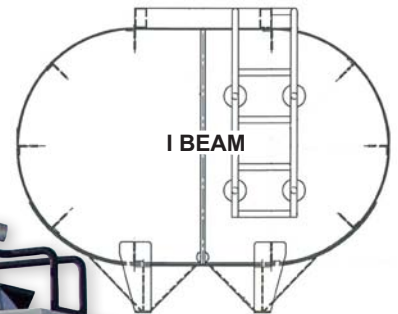
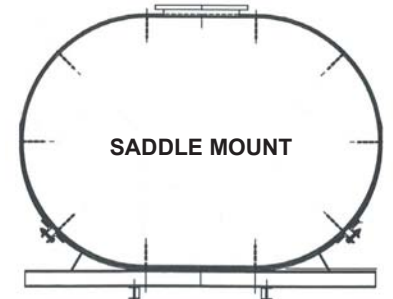
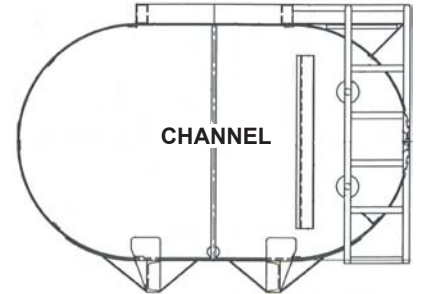


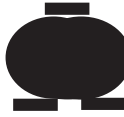
BUILT LIKE A SHERMAN TANK®

The Sherman Tank® product line is offered in a wide variety of capacities and configurations including: oval, round, elliptical, rectangular and modified square.


Options for our Sherman Tank® products are limited only by your needs and imagination. Sherman Tank® has built its technical expertise to provide larger vertical and horizontal storage solutions that meet *API Standard 650* and *NACE SP0294*.

We produce DOT Cargo & Vacuum tanks (DOT 406, 407, 412) as well as Custom pressure and vacuum vessels that are ASME **U** Stamp, National Board **NB** and Repair **R** Certified. We also produce non-certified cargo and storage water and fuel tanks.




 OVAL WATER TANKS	<u>CAPACITY</u>	<u>MODEL#</u>	<u>HEIGHT</u>	<u>WIDTH</u>	<u>LENGTH</u>	<u>WEIGHT</u>
	1000 GAL.	WT-1	43"	60"	9'-0"	1980#
	1200 GAL.	WT-2	48"	60"	10'-0"	2180#
	1500 GAL.	WT-3	43"	60"	14'-0"	2610#
	1500 GAL.	WT-4	48"	72"	10'-0"	2710#
	2000 GAL.	WT-5	48"	72"	14'-0"	3500#
	2000 GAL.	WT-6	48"	78"	12'-0"	3520#
	2500 GAL.	WT-7	48"	84"	14'-0"	3850#
	3000 GAL.	WT-8	60"	86"	14'-0"	4550#
	3500 GAL.	WT-9	60"	86"	16'-0"	4900#
	4000 GAL.	WT-10	60"	86"	18'-0"	5340#
	4500 GAL.	WT-11	60"	86"	20'-3"	6007#





 OVAL FUEL TANKS	<u>CAPACITY</u>	<u>MODEL#</u>	<u>HEIGHT</u>	<u>WIDTH</u>	<u>LENGTH</u>	<u>WEIGHT</u>	
	1000 GAL.	FT-1 XS	60"	95"	4'-0"	2280#	
	1250 GAL.	FT-2 XS	60"	95"	5'-0"	2735#	
	1500 GAL.	FT-4 XS	60"	95"	6'-0"	3200#	
	2000 GAL.	FT-6 XS	60"	95"	8'-0"	3973#	
	2500 GAL.	FT-7 XS	60"	95"	10'-0"	4710#	
	3000 GAL.	FT-8 XS	60"	95"	12'-0"	5302#	
	3500 GAL.	FT-9 XS	60"	95"	14'-0"	5716#	
	4000 GAL.	FT-10 XS	60"	95"	16'-0"	6378#	
	4500 GAL.	FT-11 XS	60"	95"	18'-0"	7022#	
	ADD 8 3/16" FOR SUBFRAME & 5" FOR ROLL OVER PROTECTION						

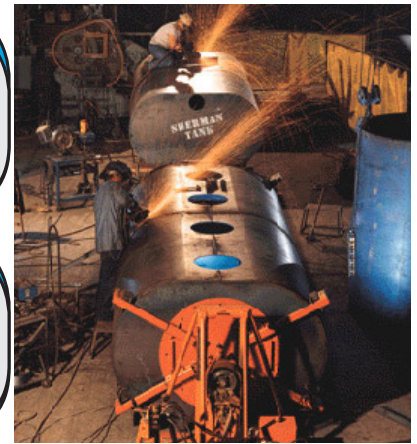



 ELLIPTICAL TANKS	<u>CAPACITY</u>	<u>MODEL#</u>	<u>HEIGHT</u>	<u>WIDTH</u>	<u>LENGTH</u>	<u>WEIGHT</u>
	800 GAL.	FT-1 XS	64"	96"	3'-9"	1882#
	1000 GAL.	FT-1 XS	64"	96"	4'-5"	2183#
	1500 GAL.	FT-4 XS	64"	96"	6'-8"	3325#
	1750 GAL.	FT-5 XS	64"	96"	7'-6"	3541
	2000 GAL.	FT-6 XS	64"	96"	8'-0"	4344#



 MODIFIED SQUARE TANKS	<u>CAPACITY</u>	<u>HEIGHT</u>	<u>WIDTH</u>	<u>LENGTH</u>
	2250 GAL.	55"	92"	10'
	4000 GAL.	65"	92"	15'
other dimensions available upon request				

 ROUND TANKS	<u>CAPACITY</u>	<u>HEIGHT</u>	<u>WIDTH</u>	<u>LENGTH</u>
	800 GAL.	55"	92"	10'
	1000 GAL.	60"	92"	15'
	1500 GAL.	65"	92"	15'
	1750 GAL.	65"	92"	15'
other dimensions available upon request				



 RECTANGULAR TANKS	<u>CAPACITY</u>	<u>MODEL#</u>	<u>HEIGHT</u>	<u>WIDTH</u>	<u>LENGTH</u>	<u>WEIGHT</u>
	1500 GAL.	RWT-15	46"	72"	9'-0"	2230#
	2000 GAL.	RWT-20	48"	82"	10'-0"	2920#
	2500 GAL.	RWT-25	60"	82"	10'-0"	3580#
	3000 GAL.	RWT-30	72"	82"	10'-0"	3980#
ADD 3" HEIGHT FOR SKIDS						